

GRANT CONDENSING RANGE

NOW INCLUDES
CONDENSING COMBI
RANGE



UNIQUE OIL-FIRED CONDENSING BOILERS FOR **INTERNAL** AND **EXTERNAL** INSTALLATIONS WITH OUTPUTS FROM 15 TO 46kW



PRODUCTS AVAILABLE IN THIS RANGE:

- Grant Vortex Kitchen Models
- Grant Vortex Kitchen System Models
- Grant Vortex Utility Models
- Grant Vortex Utility System Models
- Grant Vortex Outdoor Modules
- Grant Vortex Combination Models



MAY 2005 ISSUE



ADVANCING OIL HEATING TECHNOLOGY

GRANT COMPANY PROFILE

With an established history of over 30 years designing, manufacturing and supplying a wide range of highly efficient and reliable products, Grant has become a firm favourite for many heating engineers and householders when choosing a new or replacement oil-fired boiler.



The Company has achieved an enviable reputation within the heating industry for its approach to new concepts like condensing technology. Today, Grant's range of Vortex oil-fired condensing boilers tops the Government SEDBUK Efficiency Database and is the market leading product in this sector.

ENDORSED AT THE HIGHEST LEVEL

Grant products and facilities have been endorsed at the highest level with the Grant Vortex range being named 'Domestic H&V Product of the Year 2003' and the Training Centre winner of 'Training Initiative of the Year 2004' both in the prestigious H&V News Awards for Excellence - known in the Trade as "The Oscars of the Heating Industry". Grant's training facilities were also acknowledged recently when they were awarded OFTEC Training Centre of the Year.



No other company in the domestic oil heating industry has ever received this level of recognition for product design, high quality engineering, innovation and training.

It was also the first time in the history of the H&V News Awards for Excellence that an oil-fired boiler has won the coveted trophy.

1

GRANT UK 0870 7775553

CONDENSING

A NEW APPROACH TO OIL-FIRED HEATING

The name 'Grant' has in recent years become synonymous with highly efficient oil-fired central heating appliances. Designs like the 'Multi Pass' boiler have achieved efficiency levels far in excess of any UK or European Standards and have helped thousands of homes to reduce their annual fuel bills. So it will come as no surprise to see Grant yet again leading the way with the introduction of the Grant Vortex oil-fired condensing boiler range.

QUALITY DESIGN

Despite the sophisticated technology employed in the development of new products, Grant's design engineers have kept true to the original Grant concept of simplicity in installation and maintenance which are essential ingredients of today's heating systems. Grant products are manufactured from the highest quality materials and designed not just to meet, but to exceed all relevant performance and environmental standards.

Backed by highly efficient administration and Grant's comprehensive extended warranty schemes, the Company is also focused on providing an exceptional after sales service for all of its customers.

WHY SHOULD YOU INSTALL AN ENERGY EFFICIENT BOILER?

A great deal of media coverage has been given to Global warming and the environmental damage caused by burning fossil fuels. There are many contributing factors, but one area that can make a significant difference and reduce the amount of harmful greenhouse gases in the atmosphere is to install a more efficient central heating boiler.

Older oil-fired boilers, designed at a time when very little consideration was given to environmental issues, can operate with efficiency levels as low as 65%. A modern oil-fired condensing boiler, like the Grant Vortex, has been tested and approved to operate at very high efficiency levels, achieving a considerable reduction in harmful emissions.

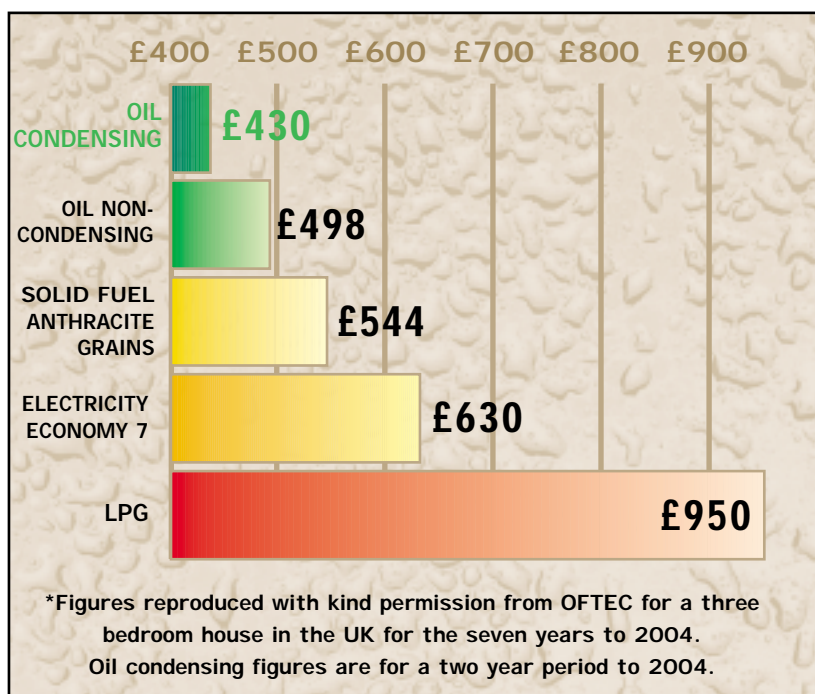


TECHNOLOGY

WHAT IS A CONDENSING BOILER?

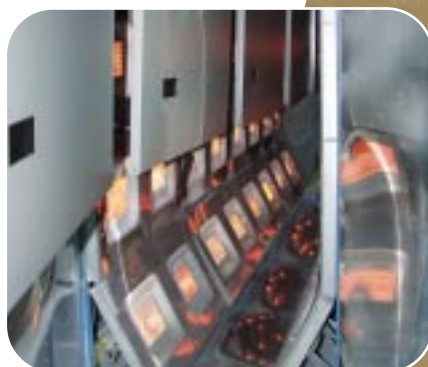
Condensing boilers differ from traditional boilers in that they are designed to capture heat normally lost through the flue system during the combustion process. Unlike traditional oil-fired boilers the Grant Vortex condensing boiler has a built-in stainless steel heat exchanger incorporating Grant's unique turbulator baffle system, which cools the gases to a point where the latent heat, normally lost to the atmosphere through the flue, can be usefully extracted. The additional energy recovered enables the boiler to operate continuously at much higher efficiency levels, resulting in lower heating and hot water running costs.

TYPICAL ANNUAL RUNNING COSTS COMPARISON*



REST ASSURED

When you order a Grant boiler or flue system you can be secure in the knowledge that you are purchasing the best quality and most reliable product from a long established independent oil heating specialist. Our policy has always been, and always will be, total commitment to the environment we live in and the customers we serve.



CONTENTS

- 1 COMPANY PROFILE
- 2 CONDENSING TECHNOLOGY
- 3 GRANT VORTEX KITCHEN RANGES
- 5 GRANT VORTEX UTILITY RANGES
- 7 GRANT VORTEX OUTDOOR MODULE RANGES
- 9 GRANT VORTEX COMBINATION MODELS

CONDENSING GUIDES

Grant have produced a comprehensive DVD, supplied FREE on request, which will provide you with all the essential facts you need to know about oil-fired condensing boilers. (While stocks last). There is also a useful condensing guide which answers the most commonly asked questions regarding oil-fired condensing boilers. Please contact our Sales Department on:

0870 7775553



GRANT UK 0870 7775553

KITCHEN CONDENSING

GRANT VORTEX KITCHEN RANGE

The award winning Grant Vortex boiler range has, over the last few years, become the market leader in oil-fired condensing boilers, achieving gross seasonal efficiencies of between 94-95%. The Kitchen and System models were voted H&V Product Of The Year 2003 and have quickly become popular with both heating engineers and householders, setting the standard for oil-fired condensing boiler design.

As you would expect from a product with this pedigree, the Grant Vortex Kitchen Range is exceptionally quiet in operation, featuring the latest Riello burner technology. All models incorporate system diagnostics enabling easier setting and control of both the temperature and general operation of the boiler.

SEALED SYSTEM MODELS

All Sealed System versions include a factory fitted expansion vessel, filling loop, pressure gauge, automatic air vent, pressure relief valve and circulating pump, enabling boilers to be installed without the need for an expansion tank in the loft.

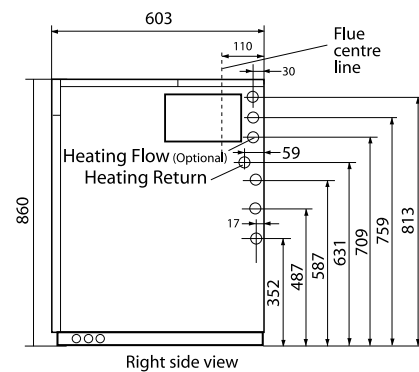
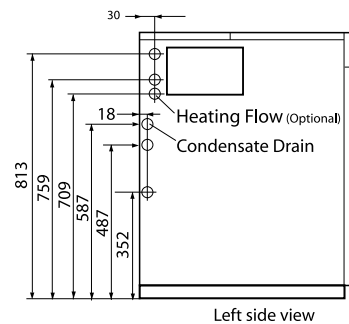
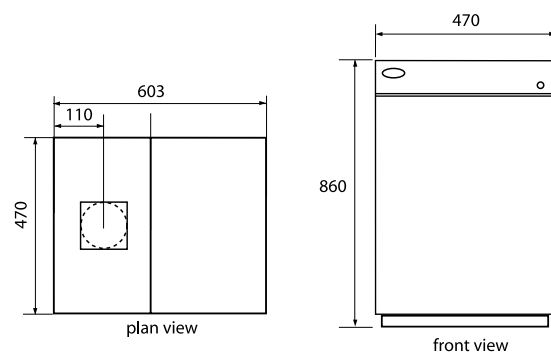
PROGRAMMER OPTION

A simple electronic programmer option is also available which can be plugged in to a pre-wired slot on the boilers control panel.



DIMENSIONS

GRANT VORTEX KITCHEN 15/26

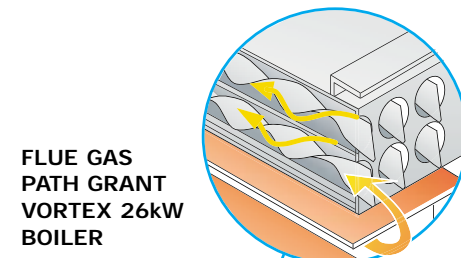


All dimensions in millimetres

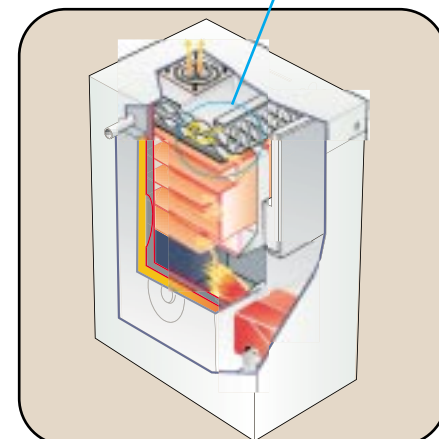
BOILER CONNECTIONS

| | KITCHEN MODELS | SYSTEM MODELS |
|-------------------|-------------------------------------|---------------|
| Model | 15 - 26 | 15 - 26 |
| Output kW | 15 to 26 | 15 to 26 |
| Output Btu/h | 50 to 90,000 | 50 to 90,000 |
| Flow connection | 22mm | 22mm |
| Return connection | 22mm | 22mm |
| Cold Main | n/a | 15 |
| Pressure Relief | n/a | n/a |
| Condensate Pipe | 3/4" (19mm) Plastic 'Overflow' Pipe | |

NOTE 1: The boiler flow connection exits the casing on the left or right hand side. The return connection is located on the right and the condensate drain on the left.
NOTE 2: Grant Vortex kitchen boilers are suitable for fully pumped systems only.



FLUE GAS PATH GRANT VORTEX 26kW BOILER

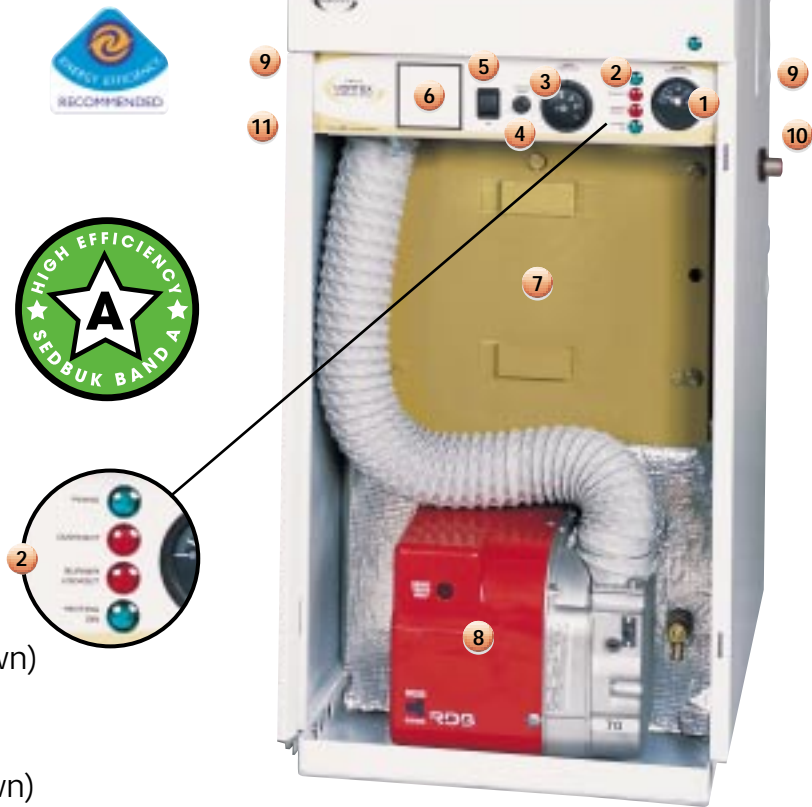


THE GRANT VORTEX KITCHEN RANGE

Grant Vortex Kitchen Model

VORT1526

- 1 System Temperature Gauge
- 2 Diagnostic Indicator Lights
- 3 Boiler Thermostat
- 4 Overheat Thermostat
- 5 Boiler ON/OFF Switch
- 6 Optional Programmer Kit Position
- 7 Front Service Access Door
- 8 Riello RDB Burner
- 9 Reversible Heating Flow (not shown)
- 10 Heating Return
- 11 Condensate Drain Point (not shown)



MODEL SHOWN VORT1526



MODEL SHOWN VORT1526S

Grant Vortex Kitchen Sealed System Model

VORT1526S

- 1 System Temperature and Pressure Gauge
- 2 Diagnostic Indicator Lights
- 3 Boiler Thermostat
- 4 Overheat Thermostat
- 5 Boiler ON/OFF Switch
- 6 Optional Programmer Kit [shown fitted]
- 7 10 litre Expansion Vessel
- 8 Riello RDB Burner
- 9 Reversible Heating Flow (not shown)
- 10 Heating Return
- 11 Condensate Drain Point (not shown)

UTILITY CONDENSING

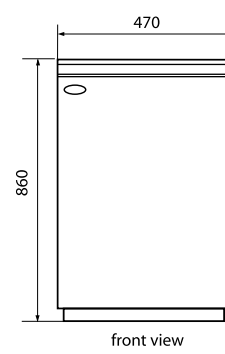
THE GRANT VORTEX UTILITY RANGE

Following the success of the award winning Grant Vortex Kitchen range of condensing boilers, Grant have responded to customer demand by producing a competitively priced Utility version of this innovative product. The new Grant Vortex Utility Range features the unique stainless steel condensing heat exchanger, used on the kitchen models, but has a simplified casing, control panel and pipework arrangement, making them the ideal choice for Utility room installations. Outputs have increased to 46kW (157,000Btu/h) with the introduction of two larger Utility models. However, casing dimensions have remained extremely compact making siting of boilers far easier. In fact by installing Grant Utility models in a modular arrangement (two or more) there is practically no situation that cannot be accommodated. As with the kitchen models, Sealed System variants of the Utility range are available in all outputs.

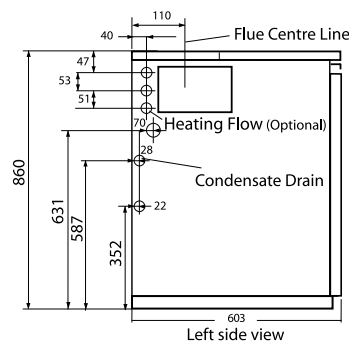


DIMENSIONS

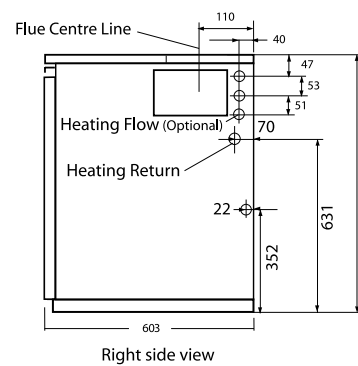
GRANT VORTEX 15-26 UTILITY



front view

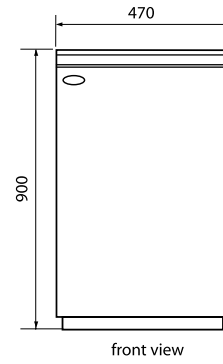


Left side view

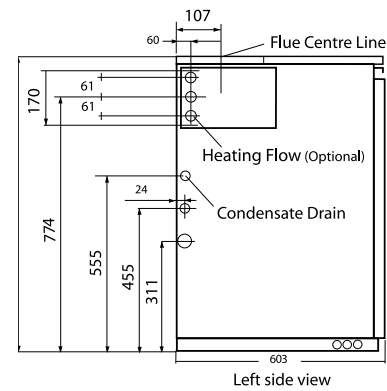


Right side view

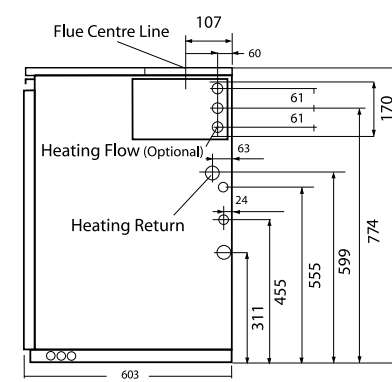
GRANT VORTEX 26-36 UTILITY
GRANT VORTEX 36-46 UTILITY



front view



Left side view



Right side view

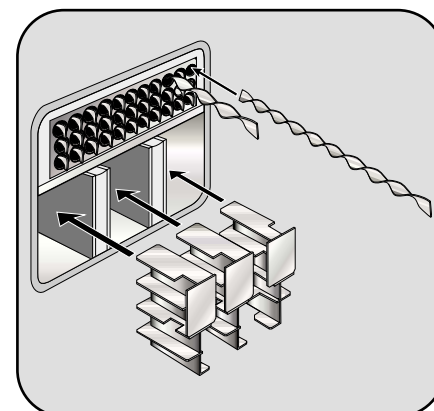
All dimensions in millimetres

BOILER CONNECTIONS

| Model | UTILITY MODELS | | | UTILITY SYSTEM MODELS | | |
|-------------------|----------------------------|-------------------|--------------------|-----------------------|-------------------|--------------------|
| | 15-26 | 26-36 | 36-46 | 15-26S | 26-36S | 36-46S |
| Output kW | 15 to 26 | 26 to 36 | 36 to 46 | 15 to 26 | 26 to 36 | 36 to 46 |
| Output Btu/h | 51,180 to 88,700 | 88,700 to 123,000 | 123,000 to 157,000 | 51,180 to 88,700 | 88,700 to 123,000 | 123,000 to 157,000 |
| Flow connection | 22mm | 28mm | 28mm | 22mm | 28mm | 28mm |
| Return connection | 22mm | 28mm | 28mm | 22mm | 28mm | 28mm |
| Cold Main | n/a | n/a | n/a | 15mm | 15mm | 15mm |
| Pressure Relief | n/a | n/a | n/a | 15mm | 15mm | 15mm |
| Condensate Pipe | 22mm Plastic Plumbing Pipe | | | | | |

NOTE 1: The boiler flow connection exits the casing on the left or right hand side. The return connection is located on the right and the condensate drain on the left.
NOTE 2: Grant Vortex Utility boilers are suitable for fully pumped systems only.

BAFFLE ARRANGEMENT GRANT VORTEX 36kW BOILERS



THE GRANT VORTEX UTILITY RANGE

Grant Vortex Utility Models

| | |
|---------|---------|
| VTX1526 | VTX2636 |
| VTX3646 | |



- 1 Boiler Thermostat
- 2 Overheat Thermostat
- 3 Boiler ON/OFF Switch
- 4 Front Service Access Door
- 5 Drain Cock
- 6 Riello RDB Burner
- 7 Reversible Heating Flow (Not shown)
- 8 Heating Return
- 9 Condensate Drain (Not shown)



MODEL SHOWN VTX15-26

Grant Vortex Utility Sealed System Models

| | |
|----------|----------|
| VTXS1526 | VTXS2636 |
| VTXS3646 | |



- 1 System Pressure Gauge
- 2 Boiler ON/OFF Switch
- 3 Boiler Thermostat
- 4 Overheat Thermostat
- 5 Expansion Vessel (Size varies depending on model)
- 6 Drain Cock
- 7 Reversible Heating Flow
- 8 Heating Return
- 9 Condensate Drain (Not shown)
- 10 Riello RDB Burner



MODEL SHOWN VTXS15-26

OUTDOOR CONDENSING

THE GRANT VORTEX OUTDOOR MODULE RANGE

Grant developed their first oil-fired Outdoor Module in 1986 and although the concept was new to the oil market, it quite quickly became a popular addition to Grant's boiler range. It is therefore appropriate that Grant has again taken the lead with the introduction of three new Grant Vortex Condensing Outdoor Modules, with outputs between 15 and 46 kW (50 - 157, 000Btu/h).

UNIQUE FEATURES

This high efficiency Outdoor Module range has some unique features including multi-directional flueing options, high quality external powder coated paint finish, built-in boiler frost protection, mains isolating switch and a test switch.

SEALED SYSTEMS

Outdoor condensing modules can be converted to sealed system operation by purchasing a pre-assembled kit from Grant UK. The sealed system kit includes an expansion vessel (size varies), automatic air vent, pressure relief valve and circulating pump. A filling loop and pressure gauge are also supplied as part of the kit. These can be fitted within the module casing, or ideally in a convenient site within the building, located between the cold main and central heating return.

BOILER CONNECTIONS

| | OUTDOOR MODULES | | |
|-------------------|-------------------------------------|-------------------|--------------------|
| Model | 15-26 | 26-36 | 36-46 |
| Output kW | 15 to 26 | 26 to 36 | 36 to 36 |
| Output Btu/h | 51,180 to 88,700 | 88,700 to 123,000 | 123,000 to 157,000 |
| Flow connection | 22mm | 28mm | 28mm |
| Return connection | 22mm | 28mm | 28mm |
| Cold Main | n/a | n/a | n/a |
| Pressure Relief | n/a | n/a | n/a |
| Condensate Pipe | 3/4" (19mm) Plastic 'Overflow' Pipe | | |

NOTE: 1) All boiler connections can be positioned to the left or right of the appliance. 2) Grant Vortex Condensing Modules are suitable for fully pumped systems only.

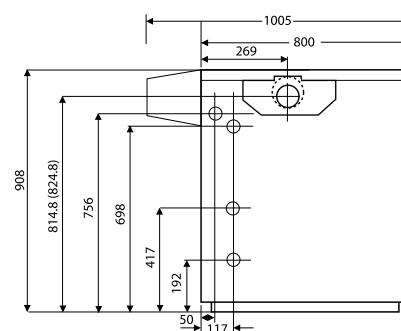
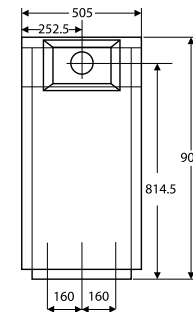
7

GRANT UK 0870 7775553

DIMENSIONS

GRANT VORTEX OUTDOOR
15-26 26-36 36-46

All dimensions in millimetres



Rear flue outlet



Optional side flue outlet



Optional conventional flue starter elbow
(see Green Flue System)

THE GRANT VORTEX OUTDOOR MODULE RANGE

Grant Vortex Outdoor Modules

VTXOM1526

VTXOM2636

VTXOM3646

- 1 Low Level Flue (Rear)
- 2 Optional Side Flue Exit
- 3 Optional Pipe Entry Points
- 4 Condensate Trap/Outlet
- 5 External Powder Coated Finish
- 6 Stainless Steel Terminal Guard



Frost Stat set to 5°C
(factory fitted inside
control panel)



MODEL SHOWN VTXOM1526
(REAR VIEW)

Grant Vortex Outdoor Modules

VTXOM1526

VTXOM2636

VTXOM3646

- 1 Control Panel (Incorporating Frost Stat)
- 2 Optional Side Flue Exit
- 3 Optional Pipe Entry Points
- 4 Riello RDB Burner
- 5 Mains Isolating Switch
- 6 Test Switch



Outdoor
Module with
fitted
stainless
steel
terminal
guard



MODEL SHOWN VTXOM1526
(FRONT VIEW)

COMBI CONDENSING

SEDBUK 'A' RATED COMBI'S

The Grant Vortex Condensing Combi's are available in two sizes, 26kW and 36kW, 'A' Rated with efficiencies of 92.2% and 94.2% respectively. The boilers are extremely compact in size and have a number of features not usually found on oil combination boilers.

UNIQUE DESIGN

Both of the new Grant UK combi boilers feature much larger plate heat exchangers, which due to their low water content and larger surface area, vastly increase the hot water performance available. Mixing valves are pre-set at 50°C, controlling accurately the hot water draw off temperature from the boiler. Grant Vortex condensing combi's feature a low system pressure cut off switch, enabling the combi to protect itself in the unlikely event of system water loss. There are also two very accurate electronic temperature controls which allows the boiler to operate in condensing mode on central heating, whilst maintaining its instant hot water production.

A WINNING COMBINATION

The heat exchangers of the new condensing combi's were developed from the award winning Grant Vortex kitchen range and are fitted with the latest low NOx Riello RDB Plus burner.

BOILER CONNECTIONS

| | CONDENSING COMBI MODELS | |
|-------------------|-------------------------------------|---------|
| Model | 26 | 36 |
| Output kW | 26 | 36 |
| Output Btu/h | 90,000 | 123,000 |
| Flow connection | 22mm | 28mm |
| Return connection | 22mm | 28mm |
| Cold Water In | 15mm | 22mm |
| Hot water Out | 15mm | 22mm |
| Pressure Relief | 15mm | 15mm |
| Condensate Pipe | 3/4" (19mm) Plastic 'Overflow' Pipe | |

NOTE: 1) All boiler connections can be positioned to the left or right of the appliance. 2) Grant Vortex Combi Models are suitable for fully pumped systems only.

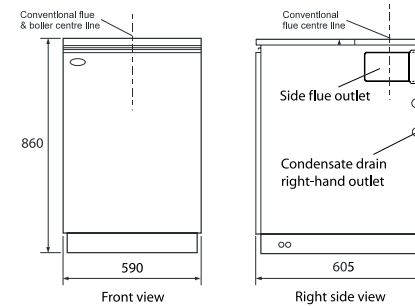
9

GRANT UK 0870 7775553



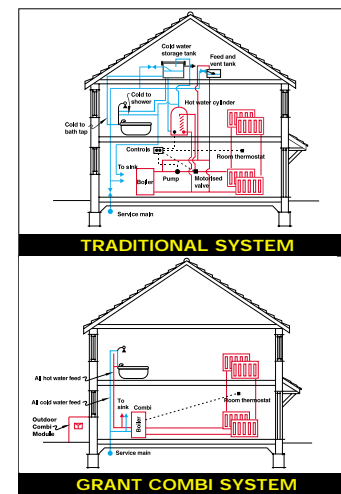
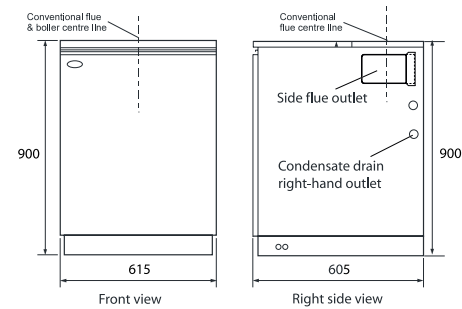
DIMENSIONS

THE COMBI 26 DIMENSIONS



All dimensions in millimetres

THE COMBI 36 DIMENSIONS



TYPICAL HOT WATER PERFORMANCE

VTXCOMBI26*

17 litres per minute at an average temperature of 50°C.
Recovery time 4 minutes approx.
Based upon 100litre draw off.

VTXCOMBI36*

20 litres per minute at an average temperature of 50°C.
Recovery time 3 minutes approx.
Based upon 100litre draw off.

MAINS WATER PRESSURE

Minimum 2.5bar (36psi)
Maximum 8bar (115psi)

*Hot water flow rate is dependant on mains pressure available.

THE GRANT VORTEX COMBI RANGE

Grant Vortex Combi Models

VTXCOMBI26

- 1 Optional Timer Kit Position
- 2 Store Isolation Switch
- 3 Low Pressure Warning Neon
- 4 Electronic Boiler Thermostat
- 5 12 litre Expansion Vessel
- 6 Zinc Plated Pipes
- 7 Blending Valve
- 8 Pump (Hot Water Circuit)
- 9 Flexible Filling Loop
- 10 35 Plate Heat Exchanger
- 11 Primary Store Drain Cock
- 12 Riello RDB Burner
- 13 Front Service Access



Pipework connections
[aerial view]
VTXCOMBI26.
Highlighting
drop-down
control panel.



MODEL SHOWN VTXCOMBI26

Grant Vortex Combi Models

VTXCOMBI36

- 1 Optional Timer Kit Position
- 2 Store Isolation Switch
- 3 Low Pressure Warning Neon
- 4 Electronic Boiler Thermostat
- 5 14 litre Expansion Vessel
- 6 Zinc Plated Pipes
- 7 Blending Valve
- 8 Pump (Hot Water Circuit)
- 9 Flexible Filling Loop
- 10 35 Plate Heat Exchanger
- 11 Primary Store Drain Cock
- 12 Riello RDB Burner
- 13 Multi-directional fluing



Optional Grant RS Kit
Digital room thermostat
(all models)



Optional
plug-in electronic or
mechanical timers



MODEL SHOWN VTXCOMBI36

GENERAL INFORMATION

EASY TO COMMISSION, SERVICE AND MAINTAIN

As with all oil-fired appliances, Grant Vortex Condensing Boilers require commissioning at the time of installation. This simple process ensures that the boiler is working at peak efficiency, which in turn will result in lower running costs and long term reliability.

Annual maintenance is also made easy by Grant's cleverly designed front service access to both the burner and all the internal serviceable parts. This feature enables Grant Vortex Condensing Boilers to be fitted neatly and unobtrusively within either the kitchen or utility room environment. Alternatively, if internal siting is a problem, space-saving outdoor versions are available.

SEASONAL EFFICIENCY COMPARISONS

| | | |
|--|---|---|
| SOURCE: SEDBUK DATABASE | | Seasonal efficiency Grant Vortex Condensing Boiler 92.7-97% SEDBUK 'A' |
| Typical seasonal efficiency 'older' oil-fired Boiler 65-81.9% SEDBUK 'D' or less | Typical seasonal efficiency 'standard' oil-fired Boiler 82-85.7% SEDBUK 'C' | |

SEDBUK RATINGS TABLE

| | | |
|---------------|---------------------|----------|
| 90% and above | GRANT VORTEX | A |
| 86%-90% | | B |
| 82%-86% | | C |
| 78%-82% | | D |
| 74%-78% | | E |
| 70%-74% | | F |
| Below 70% | | G |

View online at: www.sedbuk.com
The up to the minute guide to seasonal efficiencies of domestic boilers in the UK.

This leaflet is accurate at the time of printing but as Grant UK has a policy of continual improvement it may be superseded. We reserve the right to amend specifications without prior notice. The statutory rights of the consumer are not affected.

All products manufactured under I.S. EN ISO 9001.

™THE GRANT 'EZ-FIT FLUE' SYSTEM is a Trade Mark of Grant Engineering Ltd.

@Grant Vortex, Euroflame and Multi Pass are registered trade marks of Grant Engineering Limited. The contents of this leaflet are fully protected by copyright and nothing may be reproduced without permission from Grant UK.



EZ-FIT FLUE SYSTEMS

All Grant boilers are supplied for connection to either a 'stainless steel' conventional flue, or one of Grant's EZ-Fit Flue options. EZ-Fit Flue Kits feature self-sealing ducts which reduce installation time and ensure a perfect seal without the need for mastic or tape. The flue systems are available as low level, high level or vertical kits, for internal and external applications, and even as unique EZ-Flexi Packs, designed to enable condensing boilers to utilise an existing chimney.

PLUMBING

Condensing boilers operate at extremely high efficiency levels, producing cool flue gas temperatures, resulting in a 'plume' of vapour being visible at the flue terminal. This plume (steam) is a normal condition of condensing boiler operation and indicates that the appliance is working efficiently. As an alternative to a low level balanced flue kit, high level, or vertical kits are available, which moves the plume to a higher level.

FUEL

All burners are supplied factory set at the stated output for use on standard grade Kerosene - Class C2. Grant Vortex Condensing Boilers are not suitable for use with Class D gas oil.

INSTALLATION

Installation must comply with the current British Standards and The Building Regulations. Comprehensive technical information can be found in the installation manual, supplied with every boiler.

GUARANTEES

The unique heat exchanger on Grant Vortex Condensing Boilers is covered by a 5-year guarantee. All other component parts of the boiler are guaranteed for 2 years from the date of purchase (excluding consumable items), subject to being installed in accordance with the manufacturers instructions. There are also optional annual, or 3-year extended warranty schemes available. On completion of the installation all Grant Vortex Condensing Boilers must be commissioned and the guarantee registration form returned to Grant UK.

AFTER SALES SERVICE

For peace of mind, all Grant central heating boilers are backed by a national network of independent service engineers.

In the unlikely event of a problem occurring, your installer should telephone our Customer Service Department on:

0870 7775553



GRANT^{UK}
OIL FIRED BOILERS