

## PRODUCT CATALOGUE

Winter 03/04



**energizing home heating**

**Vokèra Ltd**

Catherine House, Boundary Way, Hemel Hempstead, Herts HP2 7RP

e-mail: [enquiries@vokera.co.uk](mailto:enquiries@vokera.co.uk) website: [www.vokera.co.uk](http://www.vokera.co.uk)

Sales, Technical Advice, General Enquiries Tel: 0870 333 0520 Fax: 01442 281403 After Sales Service: 0870 333 0220

**Vokèra Ireland**

West Court, Callan, Co Kilkenny Tel: 056 7755057 Fax: 056 7755060

Vokèra Limited reserve the right to change specification without prior notice. Consumers statutory rights are not affected.

A Riello Group Company.



**"Vokèra"  
supports Benchmark**



THE BRAND OF CHOICE

 *The brand of choice*



Linea 7-Series



Linea Max



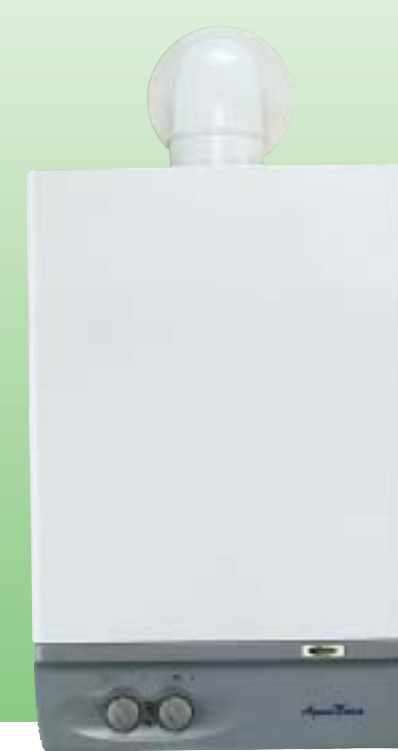
Syntesi



Compact



Mynute



AquaNova

*Quality*

Vokèra produces high quality products using commonly available proven components. Quality is built in at every stage of the process from concept and design to production, testing and after sales support.

*Reliability*

You can trust us. We have the reliability and experience that comes from having 1 million Vokèra boilers installed in the UK.

*After Sales Service*

We pride ourselves on providing a first class after sales service with a dedicated customer care centre and directly employed, factory trained, service engineers.

*Technical Support*

Our fully trained, CORGI registered technical team provides pre-sales technical advice to help select the correct boiler, through to post sales technical help to support the installer.

*Fit 'n' forget*

Vokèra provides peace of mind for both the installer and end-user. When you install a Vokèra boiler you won't have to worry about call backs. Vokèra has a long standing reputation for quality and reliability and also a first class after sales service, so you can just fit it – and forget it!



*Choice*

Vokèra specialises in the domestic market and provides products that fulfil modern domestic requirements. Our product range incorporates a product for every domestic application, from system boilers to high efficiency condensing boilers to water heaters.

*Versatility*

Vokèra products are available in natural gas and LPG versions. Kits are also available to allow simple conversion to a different gas type. A wide range of flue options means that Vokèra appliances are extremely versatile – there is nowhere in most homes that they can't be installed.

*Efficiency*

The latest technology is used to maximise the efficiency of all Vokèra products. All Vokèra boilers conform to the SEDBUK requirements of the Building Regulations. SEDBUK is a government standard which measures seasonal efficiency of all boilers.

*Italian Style*

Italy is renowned around the world for being at the forefront of style and taste. Vokèra products bring classic Italian flair and elegance to home heating.



<b>SEDBUK Band A</b>	
Hydra 26	90.3%



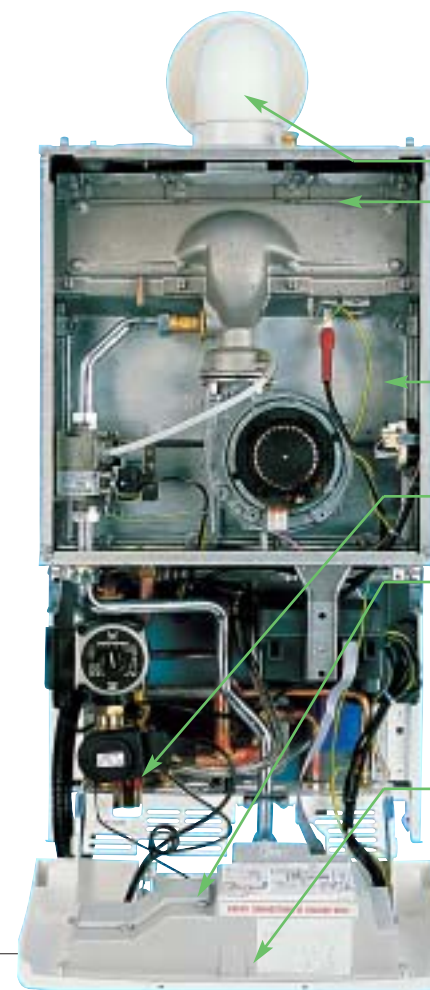
# Hydra

## high efficiency combi boiler



### Features and benefits

- A high efficiency condensing boiler is designed to burn up to 35% less gas than a conventional boiler, saving money in running costs for the end user and helping to safeguard the environment.
- Hydra takes more heat from the flue gases meaning that less heat is wasted to the environment. A specially designed large, cast aluminium heat exchanger gives exceptional heat transfer.
- Easy installation is a key feature of Hydra. The pre-fixing jig and built-in filling loop allows the system to be connected and tested without the boiler in place, whilst the standard Vokèra pipe layout allows easy replacement of older Vokèra models.
- Simple commissioning. Vokèra boilers are factory set and therefore require minimal setting during commissioning. Automatic modulation eliminates the need to range rate the boiler.
- Digital control panel provides easy to use, accurate control of the product.
- Attractive, Italian styled casing allows siting in prominent positions.
- Optional weather compensating control automatically adjusts boiler to suit weather conditions and maximises boiler efficiency.
- Hot water pre-heat gives instant delivery of domestic hot water from the boiler, saving water, time and energy.
- The self start programme protects the pump and motorised valve from sticking during long periods of inactivity.
- A built-in frost thermostat protects the appliance from the risk of frost damage.
- Anti-cycling control prevents energy wasteful on/off cycling of the boiler, and reduces unnecessary wear and tear of the appliance.
- A self-diagnostic fault finding system aids the installer during commissioning and the service engineer in the unlikely event of a fault developing.
- Hydra can be flued horizontally or vertically using Vokèra's concentric or twin flue systems making the boiler extremely versatile.
- Both natural gas and LPG versions of Hydra are available.

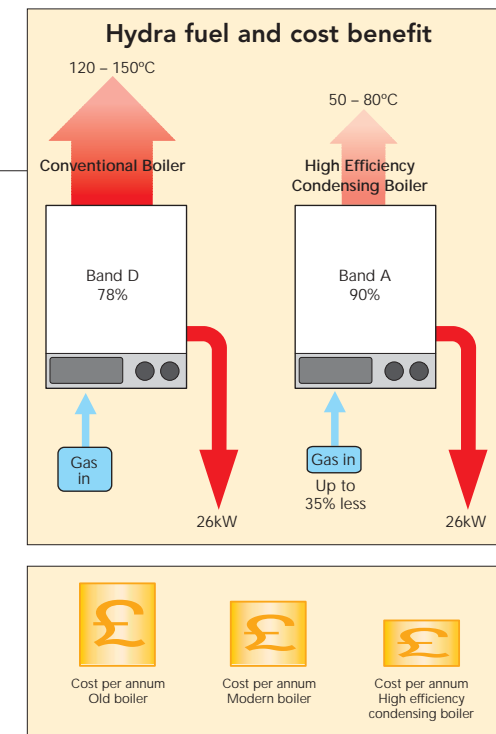
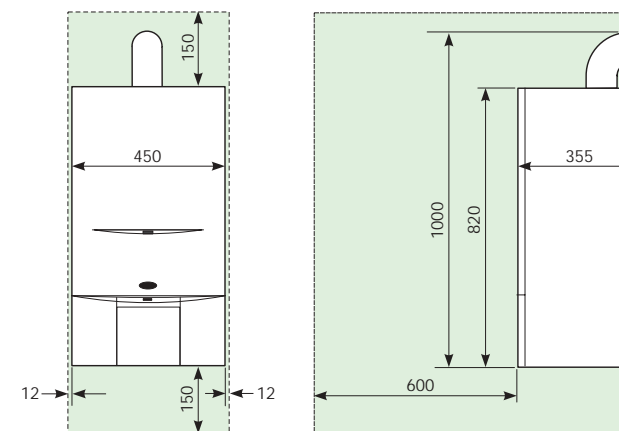


- Flue outlet
- Fully modulating pre-mix burner maintains high efficiency in all operating conditions by adjusting the ratio of air required for combustion to suit the heating demand.
- Highly efficient cast aluminium heat exchanger gives exceptional heat transfer.
- Domestic hot water pre-heat provides instant hot water from the boiler.
- Self start programme ensures the pump and motorised valve never stick during long periods of inactivity. The boiler automatically operates the components on a daily basis.
- Control Panel



Hydra control panel

### Dimensions and clearances (dimensions in mm)



Hydra	
Rated output to DHW	25.3 kW
Central heating output	25.3 kW (80°/60°) 26.8 kW (50°/30°)
Hot water flow rate (35°C rise)	10.4 litres/min
Standard flue terminal length	1000mm
Maximum flue length	
horizontal (ø100mm)	6.45m
vertical (ø100mm)	7.45m
twin (ø80/80mm)	29m/29m + terminal
Minimum cold water inlet pressure	0.15 bar
Expansion vessel	10 litres
System volume	91 litres
Weight (Dry)	55Kg
Electrical	230Vac 50Hz
Power consumption	130 W
Pipe connections	
Flow	22mm
Return	22mm
DHW	15mm
Cold water	15mm
Gas	15mm
Condensate	21.5mm
Safety Valve	15mm
External Switching	24Vac

SEDBUK Band B		
Syntesi 25	87.4%	
Syntesi 29	87.5%	
Syntesi 35	88.0%	



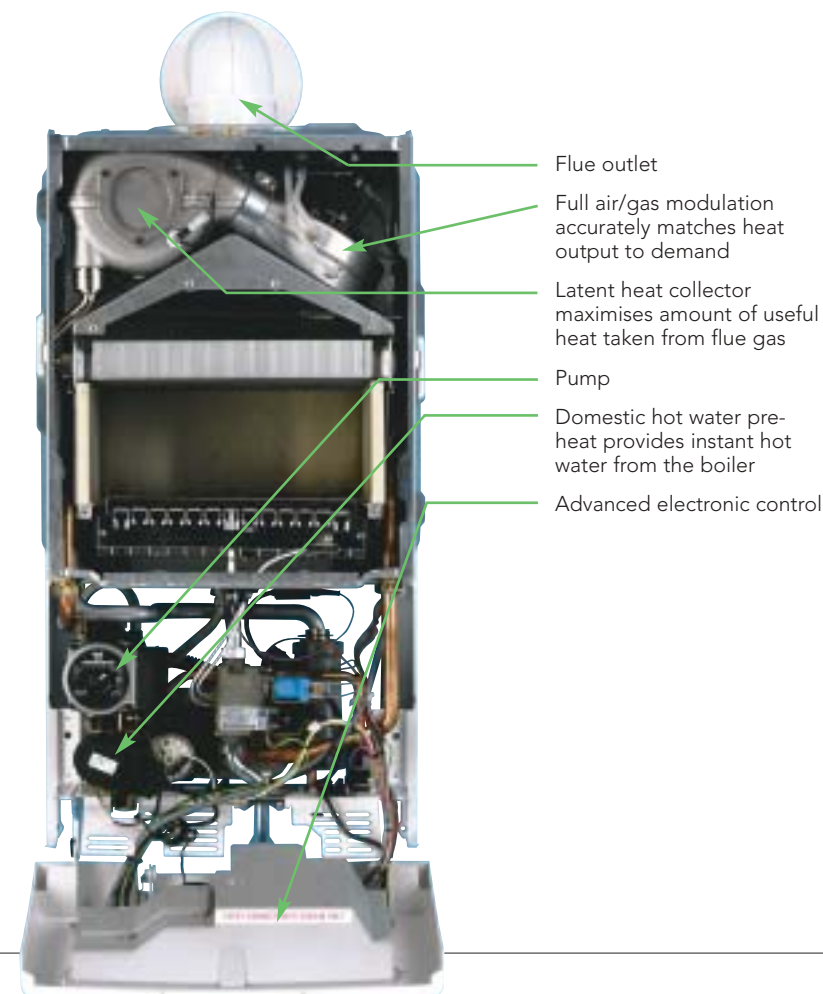
# Syntesi

## high efficiency combi boiler



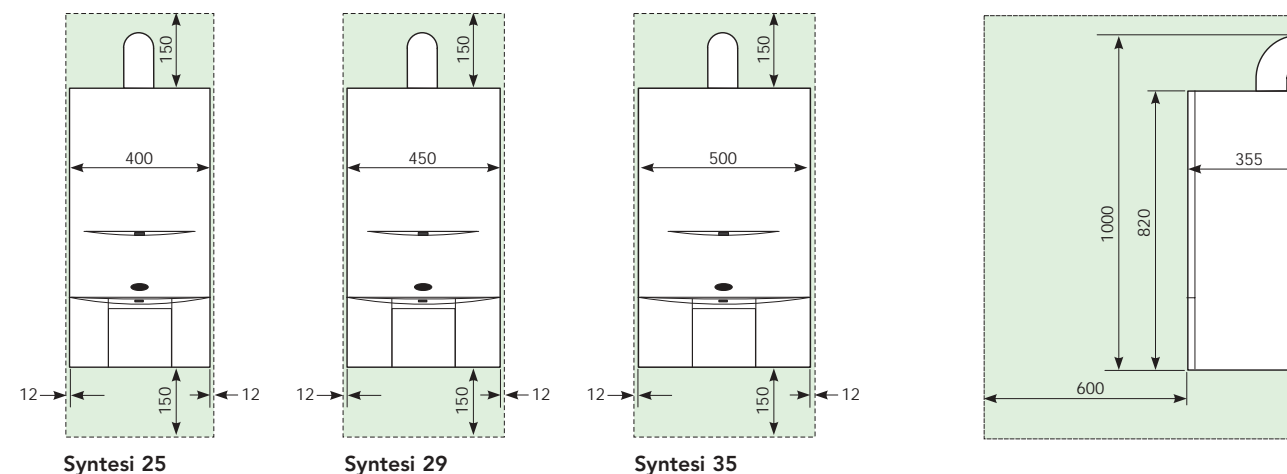
### Features and benefits

- A high efficiency condensing boiler is designed to burn up to 35% less gas than a conventional boiler, saving money in running costs for the end user and helping to safeguard the environment.
- Syntesi takes more heat from the flue gases meaning that less heat is wasted to the environment. A specially designed latent heat collector maximises the amount of heat taken from flue gases.
- Syntesi has a full air/gas modulation system that ensures output is constantly monitored and matched to demand.
- Easy installation is a key feature of Syntesi. The pre-fixing jig and built-in filling loop allows the system to be connected and tested without the boiler in place, whilst the standard Vokèra pipe layout allows easy replacement of older Vokèra models.
- Simple commissioning. Vokèra boilers are factory set and therefore require minimal setting during commissioning. Automatic modulation eliminates the need to range rate the boiler.
- The easy to understand diagnostic display aids the installer during both installation and commissioning.
- Attractive, Italian styled casing allows siting in prominent positions.
- Due to the minimal heat loss from the appliance, there is no requirement to provide compartment ventilation for cooling.
- Hot water pre-heat gives instant delivery of domestic hot water from the boiler, saving water, time and energy.
- The self start programme protects the pump and motorised valve from sticking during long periods of inactivity.
- A built-in frost thermostat protects the appliance from the risk of frost damage.
- Anti-cycling control prevents energy wasteful on/off cycling of the boiler, and reduces unnecessary wear and tear of the appliance.
- Syntesi can be flued horizontally or vertically using Vokèra's concentric or twin flue systems making the boiler extremely versatile.
- Both natural gas and LPG versions of Syntesi are available.



Syntesi control panel

### Dimensions and clearances (dimensions in mm)



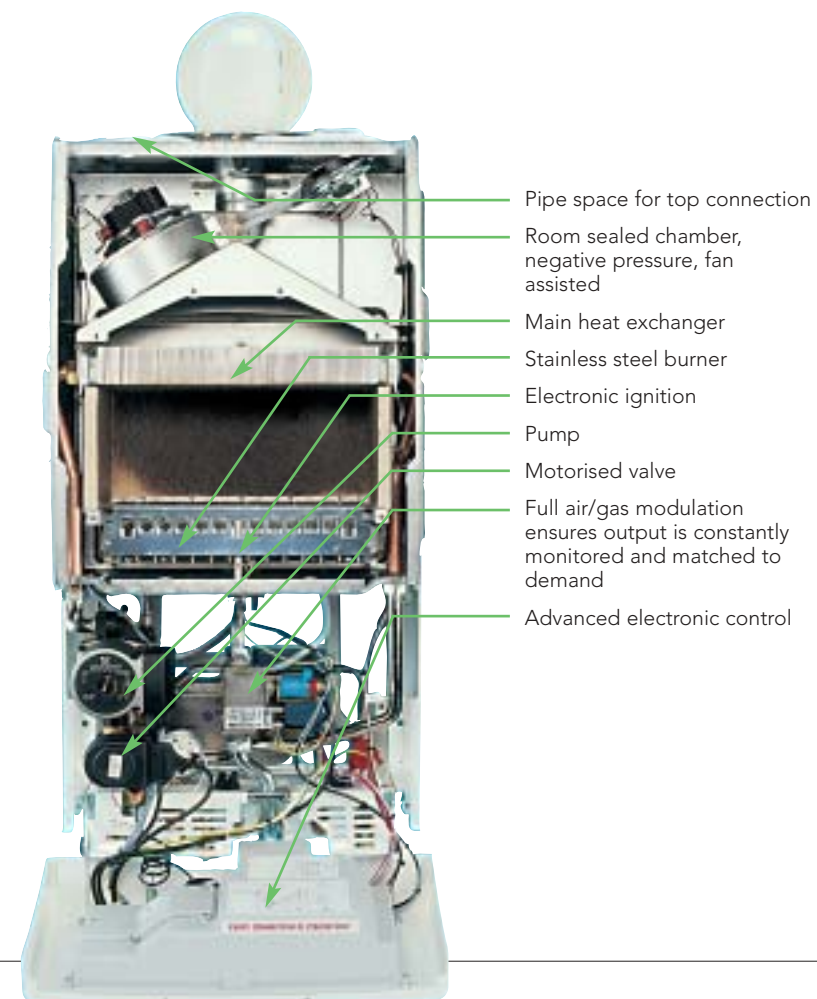
Syntesi	25	29	35	25	29	35	
Rated output to DHW	24.1 kW	28.1 kW	34.0 kW	Weight (Dry)	44Kg	47Kg	50Kg
Central heating output (80°/30°)	24.1 kW	28.1 kW	34.0 kW	Electrical	230Vac 50Hz		
(50°/30°)	25.9 kW	29.7 kW	36.0kW	Power consumption	175 W	175 W	195 W
Hot water flow rate (35°C rise)	9.9 l/min	11.5 l/min	13.9 l/min	Pipe connections			
Standard flue terminal length	1000mm	1000mm	1000mm	Flow	22mm	22mm	22mm
Maximum flue length				Return	22mm	22mm	22mm
horizontal (ø100mm)	5.75m	3.75m	1.0m	DHW	15mm	15mm	15mm
vertical (ø100mm)	6.55m	4.55m	1.8m	Cold water	15mm	15mm	15mm
twin (ø80/80mm)	25m/25m*	20m/20m*	10m/10m*	Gas	15mm	15mm	15mm
Min. cold water inlet pressure	0.15 bar	0.15 bar	0.15 bar	Condensate	21mm	21mm	21mm
Expansion vessel	8 litres	8 litres	10 litres	Safety Valve	15mm	15mm	15mm
System volume	76 litres	76 litres	91 litres	External Switching	230Vac		

\* plus flue terminal

SEDBUK Band D	
Linea 726	80.3%
Linea 730	80.3%
Linea 735	80.3%



# Linea 7-Series combi boilers

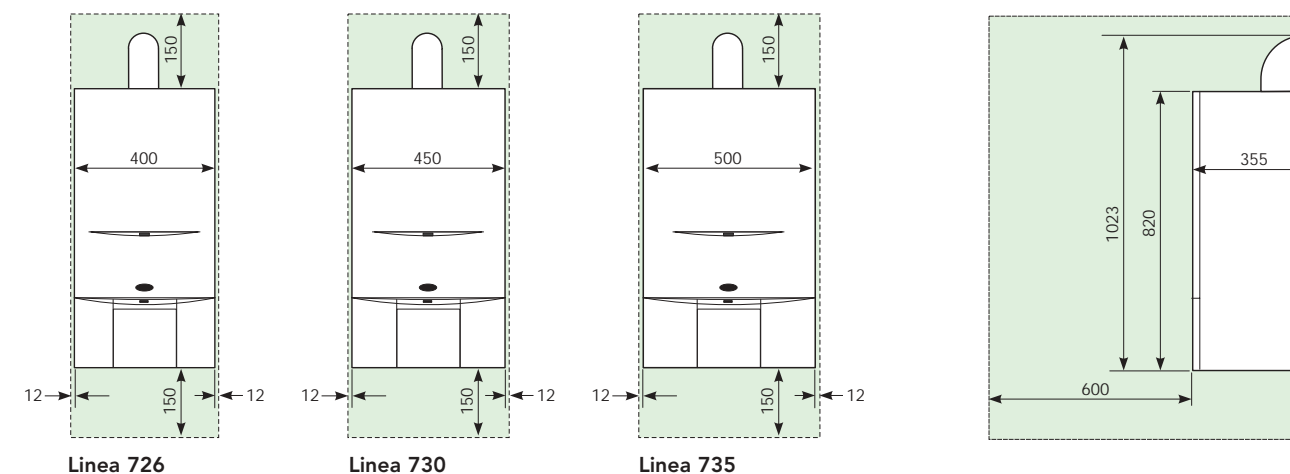


Pre-fixing Jig with built in filling loop

## Features and benefits

- Linea 7-Series have a full air/gas modulation system that ensures output is constantly monitored and matched to demand.
- Built in filling loop reduces installation time and material requirements.
- A pre-fixing jig simplifies installation and allows all pipework to be connected and tested without the need for the boiler on site. The fixing jig is highly advantageous when there is a risk of theft or damage to the boiler.
- Anti-cycling control prevents wasteful on/off cycling of the boiler, eliminating unnecessary wear and tear.
- Electronic ignition eliminates the need for a constantly running fan and energy wasteful pilot light.
- A pre-heat facility provides a rapid response to demand for domestic hot water and eliminates water wastage.
- Built in frost protection.
- Exceptionally high build quality.
- The boiler can be flued horizontally or vertically using Vokèra's concentric or twin flue systems.
- Optional 7 day or 24 hour timers available to suit the individual needs of the end user.
- Vokèra boilers are factory set and require minimal setting during commissioning.
- Linea 7-Series are all room sealed boilers allowing siting virtually anywhere within the home.
- Self start programme protects the pump and motorised valve from sticking during long periods of inactivity.
- All Linea 7-Series boilers are supplied with a 2-year manufacturer's warranty.

## Dimensions and clearances (dimensions in mm)



Linea 7-Series	726	730	735	726	730	735
Rated output to DHW	26.0 kW	30.1 kW	34.9 kW	41Kg	43Kg	48Kg
Central heating output	26.0 kW	30.1 kW	34.9 kW	Electrical 230Vac 50Hz		
Hot water flow rate (35°C rise)	10.6 l/min	12.3 l/min	14.3 l/min	Power consumption	125 W	125 W
Standard flue terminal length	830mm	830mm	830mm	Pipe connections		
Maximum flue length horizontal (ø100mm)	4.0m	3.4m	2.0m	Flow	22mm	22mm
Maximum flue length vertical (ø100mm)	4.8m	4.2m	2.8m	Return	22mm	22mm
Maximum flue length twin (ø80/80mm)	14m/14m*	14m/14m*	7m/7m*	DHW	15mm	15mm
Min. cold water inlet pressure	0.15 bar	0.15 bar	0.15 bar	Cold water	15mm	15mm
Expansion vessel (1 bar)	8 litres	8 litres	10 litres	Gas	15mm	15mm
System volume	76 litres	76 litres	91 litres	Safety Valve	15mm	15mm
				External Switching	230Vac	

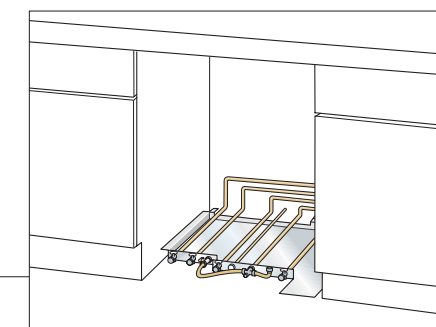
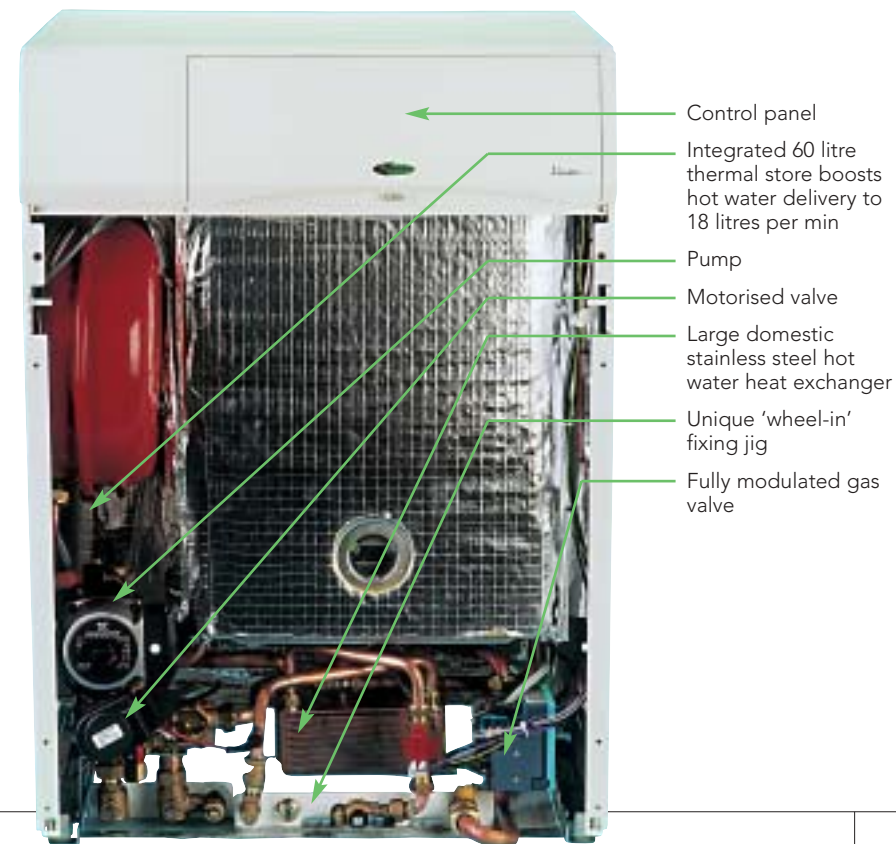
\* plus flue terminal

**SEDBUK Band D**  
Linea Max 78.0%

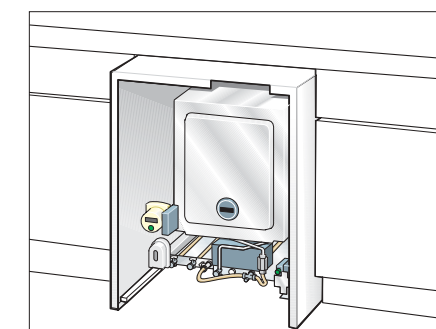


# Linea Max

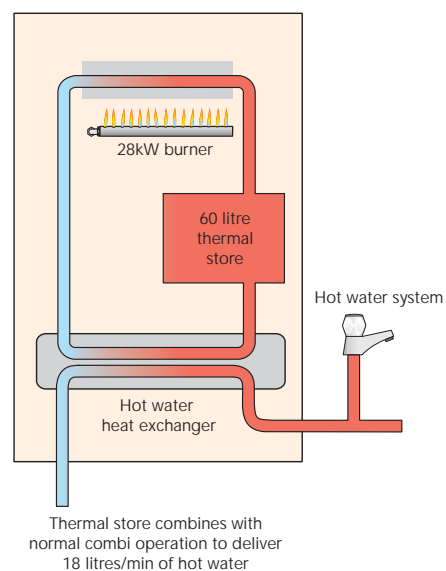
floor standing high output combi boiler



Unique 'wheel-in' installation:  
Step 1 - Connect pipework to base tray



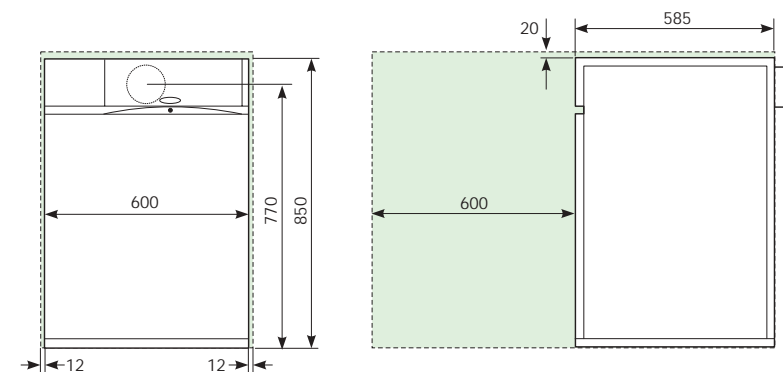
Step 2 - slide in boiler and connect unions at front



## Features and benefits

- High domestic hot water flow rate makes Linea Max ideal for larger homes.
- 55% more flow rate than a combi of an equivalent output.
- An integrated 60 litre thermal store boosts domestic hot water delivery to 18 litre/min.
- The unique 'wheel-in' fixing jig allows pipes to be connected to a base tray without the boiler in place. Then simply slide boiler in and connect the unions at the front.
- Anti-cycling control prevents wasteful on/off cycling of the boiler, eliminating unnecessary wear and tear.
- The self start programme protects the pump and motorised valve from sticking during long periods of inactivity.
- Linea Max can be flued horizontally or vertically using Vokèra's concentric or twin flue systems making the boiler extremely versatile.
- Built in filling loop reduces installation time and material requirements.
- All the features and benefits of Linea 7-Series.

## Dimensions and clearances (dimensions in mm)



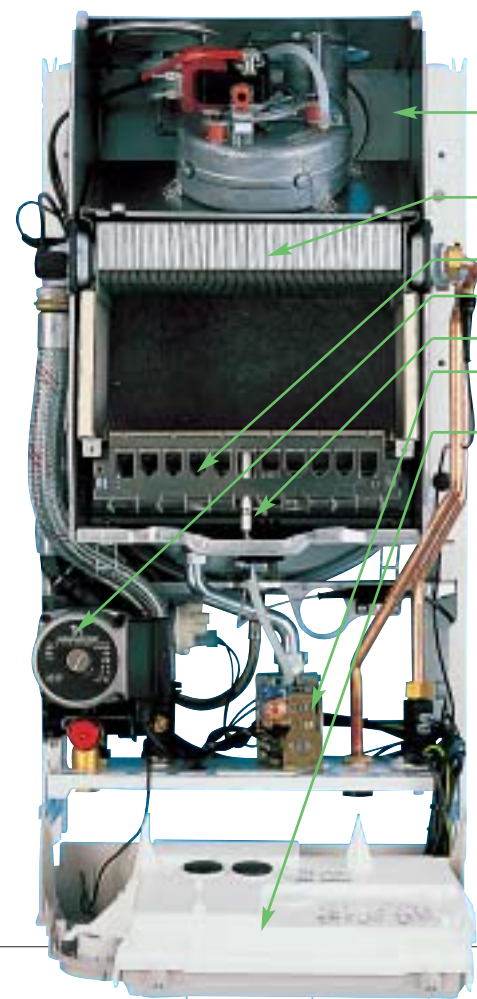
Linea Max	
Rated output to DHW	28.0 kW
Central heating output	28.0 kW
Hot water flow rate (35°C rise)	18.0 litres/min*
Standard flue terminal length	830mm
Maximum flue length	
horizontal	1.8m
vertical	4.4m
twin (horizontal only)	6m/6m + terminal
Minimum cold water inlet pressure	0.15 bar
Expansion vessel (1 bar)	10 litres
System volume	91 litres
Weight (Dry)	88kg
Electrical	230Vac 50Hz
Power consumption	130 W
Pipe connections	
Flow	22mm
Return	22mm
DHW	15mm
Cold water	15mm
Gas	15mm
Safety Valve	15mm
External Switching	230Vac

\*until thermal store depleted, then as Linea 28 (or recovery to full performance in approx 5mins)

SEDBUK Band D	
Compact 24	80.3%
Compact 28	80.3%



# Compact 24 Compact 28 combi boiler



- Room sealed chamber, negative pressure, fan assisted
- Bi-thermic heat exchanger
- Stainless steel burner
- Pump
- Electronic ignition
- Fully modulating gas valve
- Advanced electronic control

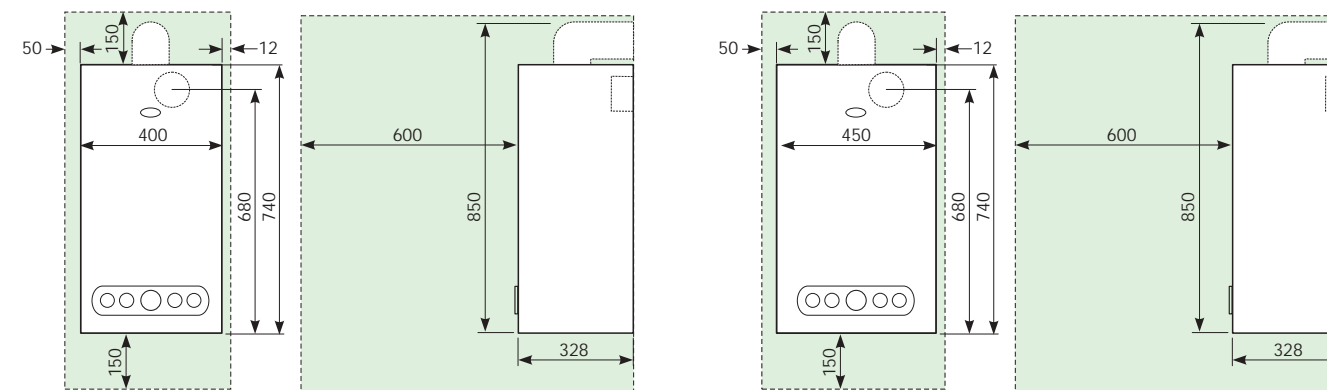


Hanging bracket and rear flue outlet template

### Features and benefits

- Choice of 24kW or 28kW outputs.
- Top flue outlet with an optional rear flue exit within the case height.
- Patented 'bi-thermic' heat exchanger provides rapid delivery of hot water.
- Simple, reliable operation. Integrated components minimise service requirements saving time and money.
- Built-in 24 hour time clock.
- Built-in frost protection.
- Anti-cycling control prevents wasteful on/off cycling of the boiler, eliminating unnecessary wear and tear of the boiler.
- Built-in automatic by-pass
- Easy to use temperature selectors provide simple and accurate control of the boiler.
- Electronic ignition eliminates the need for a constantly running fan or energy wasteful pilot light.
- Advanced flame modulation matches output to demand to maximise the efficient use of fuel.
- Exceptionally high build quality using commonly available proven components.
- Choice of horizontal or vertical flue using Vokèra's concentric or twin flue systems.
- Self start programme protects pump from sticking during long periods of inactivity.
- Auto-temperature regulation feature optimises boiler output to demand.

### Dimensions and clearances (dimensions in mm)

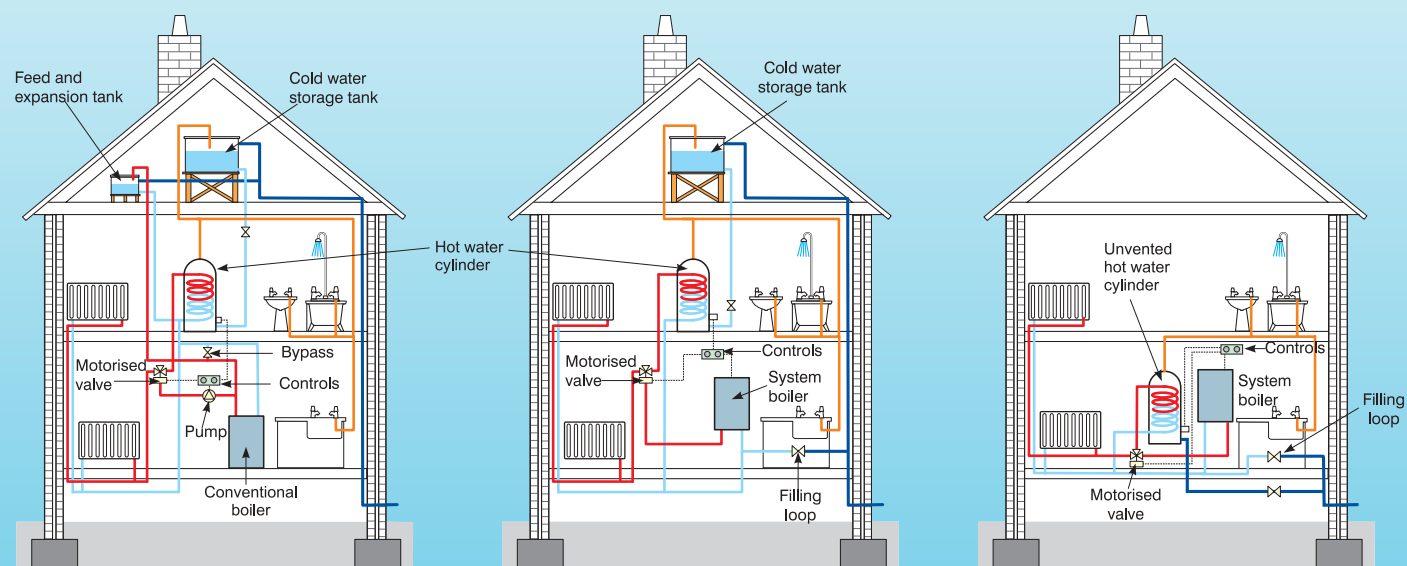


Compact 24

Compact 28

Compact	24	28	24	28
Rated output to DHW	24.0 kW	28.0 kW		
Central heating output	24.0 kW	28.0 kW		
Hot water flow rate (35°C rise)	9.8 l/min	11.5 l/min		
Standard flue terminal length	630mm*	630mm*		
Maximum flue length				
horizontal (ø100mm)	4.25m	3.4m		
vertical (ø100mm)	5m	4.2m		
twin (ø80/80mm)	14m/14m + terminal			
Minimum cold water inlet pressure	0.15 bar	0.15 bar		
Expansion vessel (1 bar)	8 litres	8 litres		
System volume	76 litres	76 litres		
Weight (Dry)			34kg	37kg
Electrical			230Vac	230Vac
			50Hz	50Hz
Power consumption			125 W	125 W
Pipe connections				
Flow			22mm	22mm
Return			22mm	22mm
DHW			15mm	15mm
Cold water			15mm	15mm
Gas			15mm	15mm
Safety Valve			15mm	15mm
External Switching			230Vac	230Vac

\*maximum length of standard rear outlet telescopic flue suitable for wall thickness 210mm - 435mm



A conventional boiler installation, with vented cylinder.

A system boiler can be fitted to an existing vented cylinder. With major components built in, installation is simpler and quicker.

Link to an unvented cylinder for the "dry loft" system – the ultimate in hassle free, high performance installation

# System boilers

## What is a System Boiler?

Like conventional boilers, a system boiler can provide central heating and hot water from a cylinder. The key difference is that all the major components are built in to a system boiler reducing time and effort for installation.

## The Vokèra system boiler range offers many advantages:

**Space saving:** compact dimensions and all major system components combined in one stylish case.

**Time saving:** installation is simplified considerably, saving time and materials over a conventional boiler system.

**Performance:** provides full central heating and, when linked to a suitable cylinder, gives plentiful domestic hot water for simultaneous draw-off from several locations.

**Easy installation:** supplied fully assembled with major components built in – no need to fit pump, expansion vessel, safety valve, automatic air vent, automatic by-pass separately.

**Peace of mind:** a boiler with a proven record of reliability.

**'Dry Loft':** connect to a sealed central heating system to eliminate the need for a feed and

expansion tank in the loft, removing the worry of frost damage to pipes and tanks.

**Economical:** superbly efficient in operation, giving reduced running costs.

**Flexibility:** a versatile room sealed fanned flue boiler which can be installed virtually anywhere in the home.

**Choice:** a wide range of outputs to satisfy all requirements – from small flat to large family home.



SEDBUK Band D	
Mynute 12e	79.1%
Mynute 16e	79.6%
Mynute 20e	78.0%
Mynute 28e	78.1%
Mynute 35e	80.4%

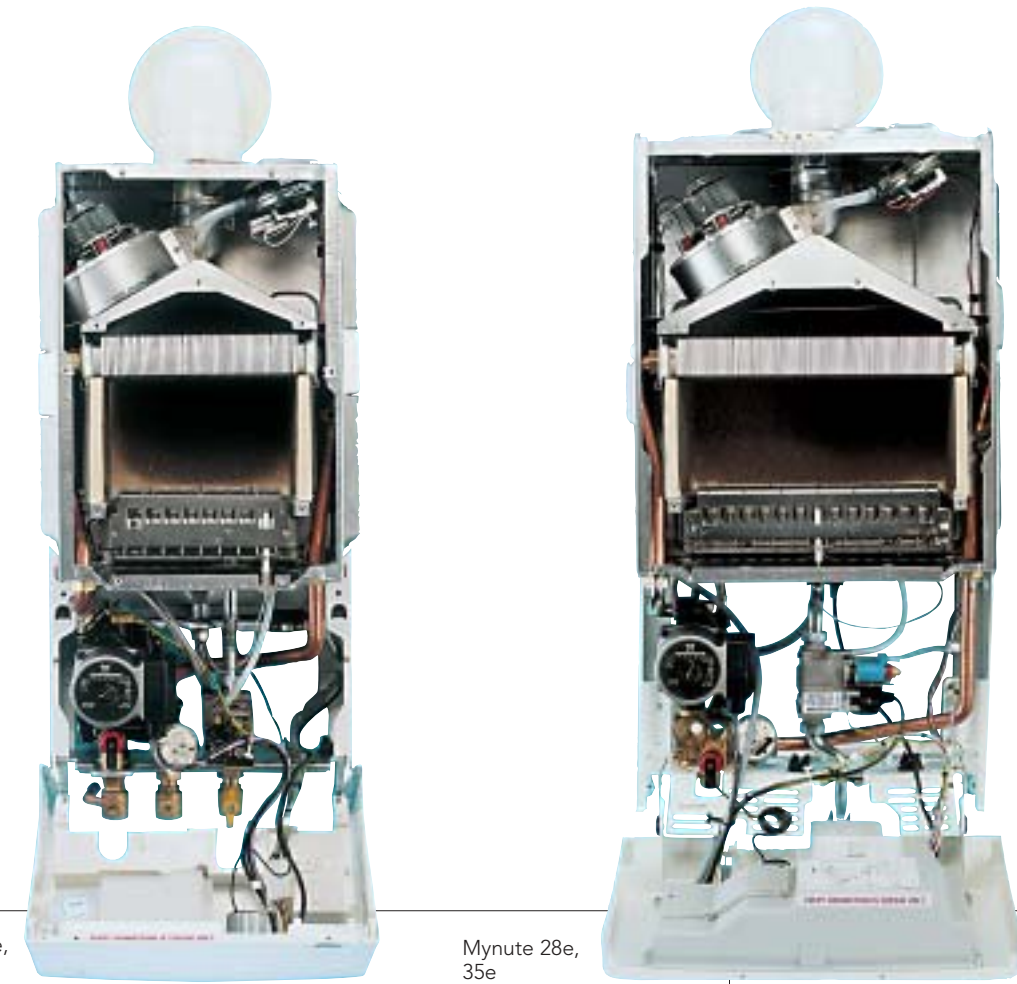


# Mynute system boiler

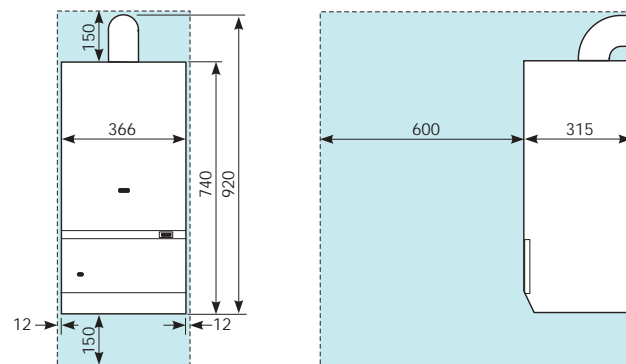
## Features and benefits

- All system components, including the pump, expansion vessel, safety valve and automatic air vent are built in, saving space along with installation time and materials.
- Dry loft possible. No expansion tank is required in the loft space which minimises the possibility of frozen pipes and tanks.
- Compact, stylish casing.
- Simplified servicing and maintenance. All working components are all in one place.
- Choice of models from 12kW to 35kW providing an output for every home.
- The boiler can be flued horizontally or vertically using Vokèra's concentric or twin flue systems.
- Mynute can operate on natural gas, LPG or Town Gas, making it extremely versatile.
- Optional built in programmers are available to allow automatic timed control of both heating and hot water.
- Built in frost protection. (Mynute 28e & 35e)
- Anti-cycling control prevents wasteful on/off cycling of the boiler, eliminating unnecessary wear and tear.
- Self start feature which protects the pump from sticking during long periods of inactivity.
- Electronic ignition eliminates the need for a constantly running fan or energy wasteful pilot light.
- Mynute can easily be connected to a standard or unvented hot water cylinder.
- Fully modulating burner (Mynute 28e & 35e) which accurately matches output to demand.
- Can be linked to other Vokèra boilers for larger output modular applications.

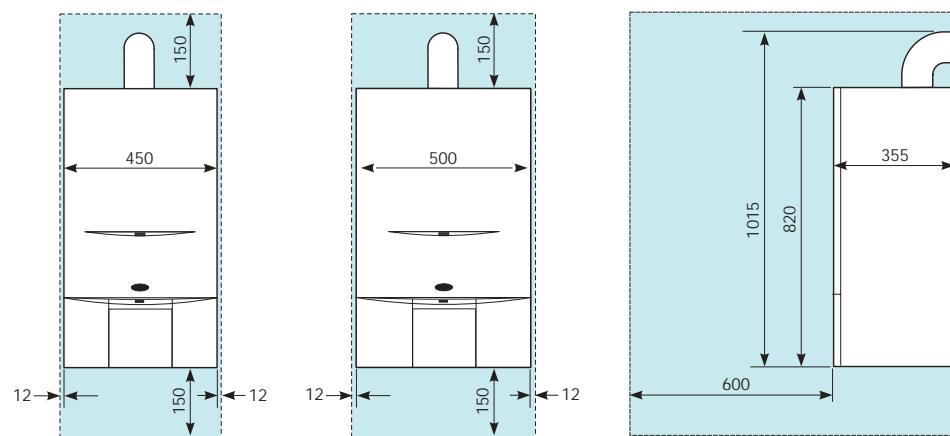




**Dimensions and clearances** (dimensions in mm)



**Mynute 12e, 16e, 20e**



**Mynute 28e**

**Mynute 35e**

**Compare the materials and installation time you save with a system boiler:**

Conventional Boiler	System boiler
Boiler	Boiler
Flue kit	Flue kit
Feed and expansion tank – fittings and insulation	Filling loop
Copper pipe and fittings (cold mains/feed/vent)	
Pump and gate valves	
Extra labour	

Mynute	12e	16e	20e	28e	35e
Central heating output	12 kW	16 kW	20 kW	28 kW	34.9 kW
Standard flue terminal length	830mm	830mm	830mm	830mm	830mm
Maximum flue length <i>horizontal (ø100mm)</i> <i>vertical (ø100mm)</i> <i>twin (ø80/80mm)</i>	4.5m 5.5m 14m/14m*	3.4m 4.4m 14m/14m*	3.4m 4.4m 14m/14m*	3.4m 4.4m 14m/14m*	2.0m 2.8m 7m/7m*
Expansion vessel (1 bar)	6 litres	6 litres	6 litres	10 litres	10 litres
System volume	55 litres	55 litres	55 litres	91 litres	91 litres
Weight (Dry)	30kg	30kg	30kg	40kg	45kg
Electrical	230Vac 50Hz	230Vac 50Hz	230Vac 50Hz	230Vac 50Hz	230Vac 50Hz
Power consumption	125 W	125 W	125 W	130 W	125 W
Pipe connections <i>Flow</i> <i>Return</i> <i>Gas</i> <i>Safety Valve</i>	22mm 22mm 15mm 15mm	22mm 22mm 15mm 15mm	22mm 22mm 15mm 15mm	22mm 22mm 15mm 15mm	22mm 22mm 15mm 15mm
External Switching	230Vac	230Vac	230Vac	230Vac	230Vac

\* plus flue terminal

**SEDBUK Band B**  
 Synergy 29 88.0%



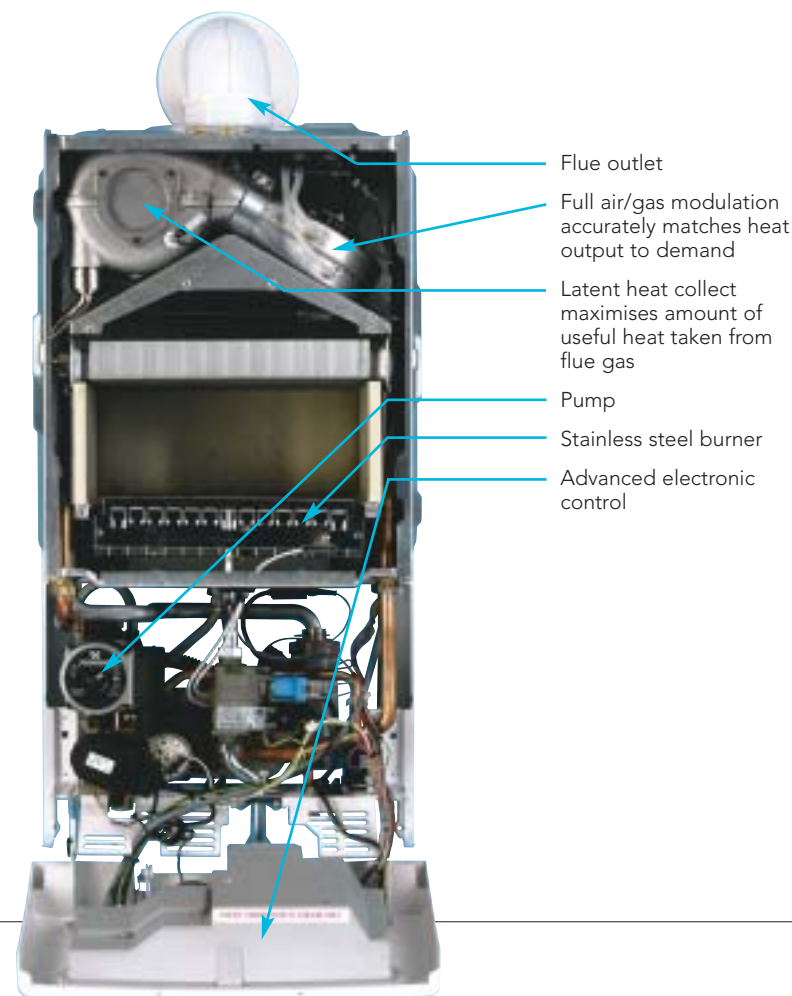
# Synergy 29

## high efficiency system boiler



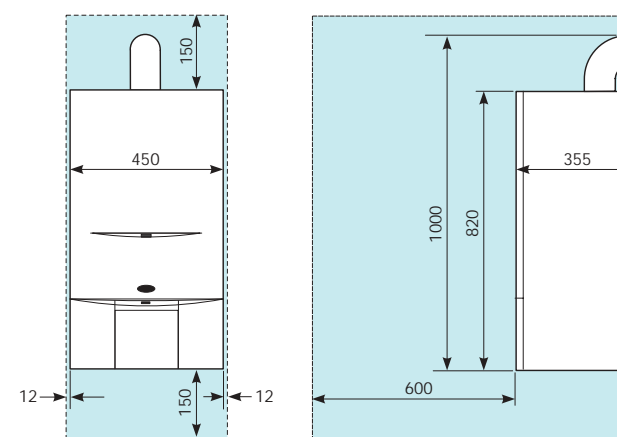
### Features and benefits

- A high efficiency condensing boiler is designed to burn up to 35% less gas than a conventional boiler, saving money in running costs for the end user and helping to safeguard the environment.
- Synergy takes more heat from the flue gases meaning that less heat is wasted to the environment. A specially designed aluminium latent heat collector ensures the maximum amount of useful heat is taken from the flue gas.
- Synergy has a full air/gas modulation system that ensures output is constantly monitored and matched to demand.
- Easy installation is a key feature of Synergy. The standard Vokèra pipe layout allows older Vokèra models to be easily replaced. All connections are compression fittings.
- Simple commissioning. Vokèra boilers are factory set and therefore require minimal setting during commissioning. Automatic modulation eliminates the need for range rating.
- The easy to understand diagnostic display aids the installer during both installation and commissioning.
- Attractive Italian styled casing allows siting in prominent positions.
- Self start programme protects the pump from sticking during long periods of inactivity.
- For use with sealed central heating systems, ensuring no need for a feed or expansion tank.
- Built-in frost thermostat.
- Anti cycling control prevents energy wasteful on/off cycling of the boiler and reduces wear and tear on the appliance.
- Synergy can be flued horizontally and vertically using either Vokèra's concentric or twin flue systems.
- All major system components are built in – pump, expansion vessel, safety valve, automatic bypass – saving space, installation time and materials.
- Synergy is available in both natural gas and LPG versions.
- Low lift weight.



Factory set requiring minimal adjustment during commissioning

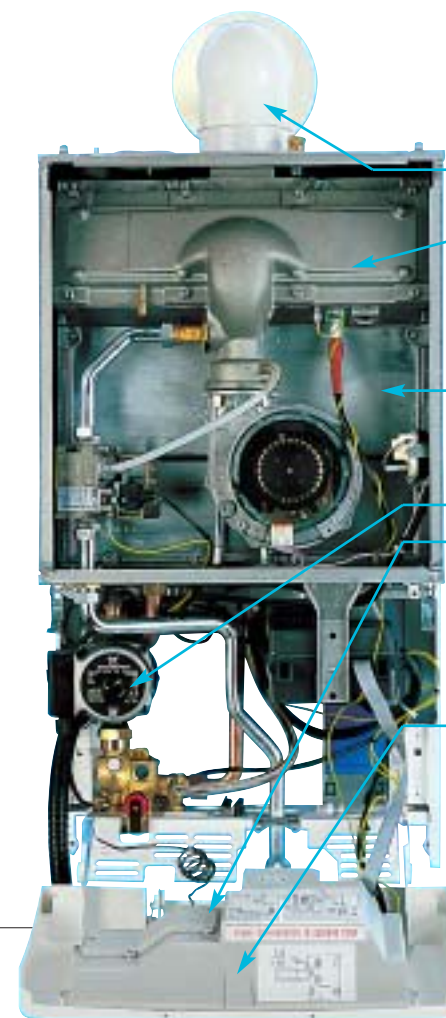
### Dimensions and clearances (dimensions in mm)



Synergy 29 control panel

Synergy 29			
Central heating output	28.1 kW (80°/60°)	Electrical	230Vac 50Hz
	29.7 kW (50°/30°)	Power consumption	175 W
Standard flue terminal length	1000mm	Pipe connections	
Maximum flue length		Flow	22mm
horizontal (ø100mm)	3.75m	Return	22mm
vertical (ø100mm)	4.55m	Gas	15mm
twin (ø80/80mm)	20m/20m + terminal	Condensate	21.5mm
Expansion vessel	10 litres	Safety Valve	15mm
System volume	91 litres	External Switching	230Vac
Weight (Dry)	44Kg		

SEDBUK Band A	
Pinnacle 16	90.1%
Pinnacle 26	90.4%



- Flue outlet
- Fully modulating pre-mix burner maintains high efficiency in all operating conditions by adjusting the ratio of air required for combustion to suit the heating demand.
- Highly efficient cast aluminium heat exchanger gives exceptional heat transfer.
- Pump.
- Self start programme ensures the pump never sticks during long periods of inactivity. The boiler automatically operates the component on a daily basis.
- Control Panel



Pinnacle 26 control panel



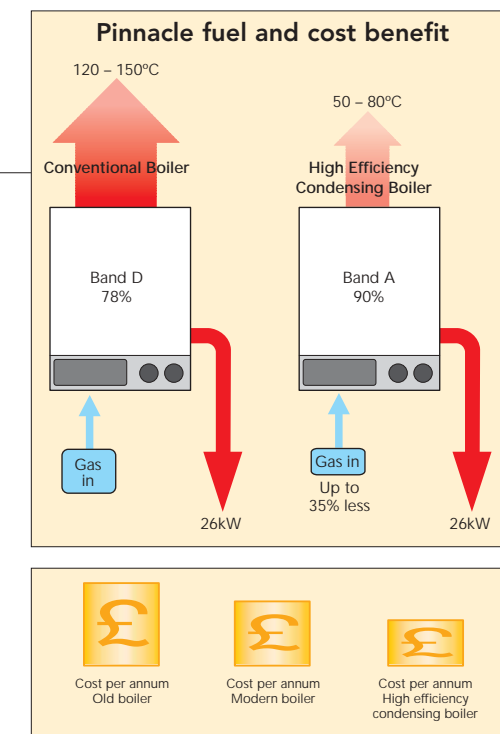
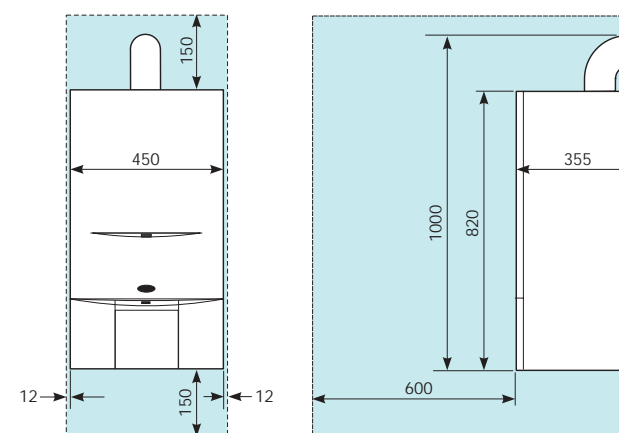
# Pinnacle 16 Pinnacle 26 high efficiency system boiler



## Features and benefits

- A high efficiency condensing boiler is designed to burn up to 35% less gas than a conventional boiler, saving money in running costs for the end user and helping to safeguard the environment.
- Pinnacle takes more heat from the flue gases meaning that less heat is wasted to the environment. A specially designed large cast aluminium heat exchanger gives exceptional heat transfer.
- Easy installation is a key feature of Pinnacle. The standard Vokèra pipe layout allows older Vokèra models to be easily replaced. All connections are compression fittings.
- Simple commissioning. Vokèra boilers are factory set and therefore require minimal setting during commissioning. Automatic modulation eliminates the need for range rating.
- Digital control panel provides easy to use, accurate control of the product.
- Attractive Italian styled casing allows siting in prominent positions.
- Self start programme protects the pump from sticking during long periods of inactivity.
- Compatible with 230Vac external controls for easy installation.
- Built-in frost thermostat.
- Anti cycling prevents energy wasteful on/off cycling of the boiler and reduces wear and tear on the appliance.
- The self diagnostic fault finding system aids the installer during commissioning and the service engineer in the unlikely event of a fault developing.
- Pinnacle can be flued horizontally and vertically using either Vokèra's concentric or twin flue systems.
- All major system components are built in – pump, expansion vessel, safety valve, automatic bypass – saving space, installation time and materials.
- Pinnacle is available in both natural gas and LPG versions.
- Two models of Pinnacle are available with outputs of 16kW or 26kW.

Dimensions and clearances (dimensions in mm)



Pinnacle	16	26		
Central heating output (80°/60°C)	15.4 kW	25.3 kW	Electrical	230Vac 50Hz 230Vac 50Hz
Central heating output (50°/30°C)	16.8 kW	26.8 kW	Power consumption	150 W 150 W
Standard flue terminal length	1000mm	1000mm	Pipe connections	
Maximum flue length			Flow	22mm 22mm
horizontal (ø100mm)	10m	6.45m	Return	22mm 22mm
vertical (ø100mm)	11m	7.45m	Gas	15mm 15mm
twin (ø80/80mm)	39m/39m*	29m/29m*	Safety	15mm 15mm
Expansion vessel	10 litres	10 litres	Condensate Discharge	21.5mm 21.5mm
System volume	91 litres	91 litres	External Switching	230Vac 230Vac
Weight (Dry)	55kg	55kg		

\* plus terminal



# AquaNova

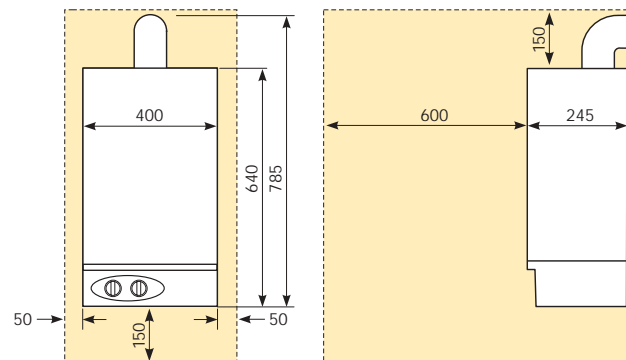
instantaneous multipoint water heater



### Features and benefits

- Simple installation and commissioning. All connections are easily accessible and the appliance features a built in flying lead.
- AquaNova has a 28kW heat output and high flow rate of 11.8 litres per minute.
- Continuous gas modulation and electronic temperature sensing gives accurate temperature control.
- Aqua Nova can be flued horizontally or vertically using Vokèra's concentric or twin flue systems.
- Simple to service. No diaphragm or water section. This reduces maintenance requirements.
- Electronic ignition eliminates the need for a constantly running fan or energy wasteful pilot light.

Dimensions and clearances (dimensions in mm)



AquaNova			
Rated output to DHW	28.8 kW	Weight (Dry)	20kg
Hot water flow rate (35°C rise)	11.8 litres/min	Electrical	230Vac 50Hz
Standard flue terminal length	830mm	Power consumption	85 W
Maximum flue length		Pipe connections	
horizontal (ø100mm)	2.4m	DHW	15mm
vertical (ø100mm)	3.6m	Cold water	15mm
twin (ø80mm)	5m/5m + terminal	Gas	15mm
Minimum cold water inlet pressure	0.15bar		

Vokèra offers a choice of two flue systems – a 100mm concentric system and an 80mm twin pipe system.

The concentric flue system is used in the majority of applications, while the twin pipe flue system is used when a longer flue length needs to be achieved.

Both systems incorporate simple to use, push fit-seals for complete ease of installation and have an attractive white finish to complement the modern, clean design of Vokèra boilers. A full range of accessories is available for both systems.

### Flue exit clearances

#### Flue exits

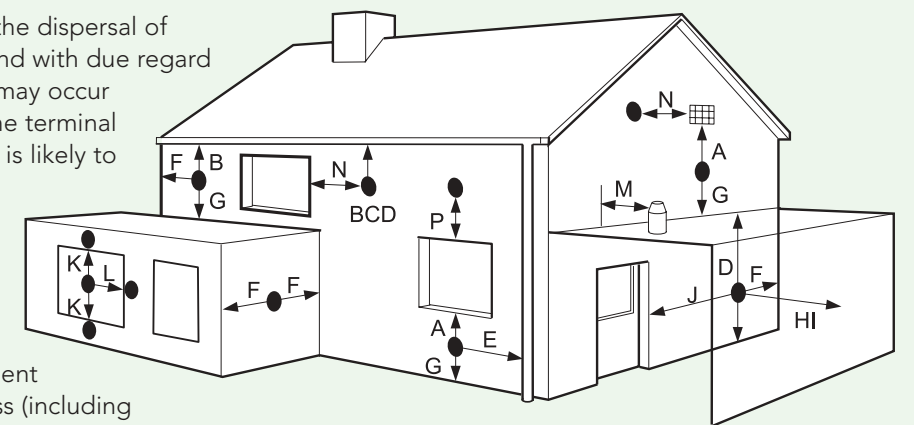
A	Directly below an opening (window, air brick, etc)	300mm
B	Below gutters, drain pipes etc	75mm
C	Below eaves	200mm
D	Below balcony, carport roof, etc	200mm
E	To side of a vertical soil/drainpipe etc	150mm
F	From internal or external corner or boundary	300mm
G	Above ground, roof or balcony level	300mm
H	From a surface or boundary facing a terminal	600mm
I	From a terminal facing a terminal	1200mm
J	From an opening in the carport into the building	1200mm
K	Vertically from a terminal on the same wall	1500mm
L	Horizontally from a terminal on the same wall	300mm
M	From a structure to the side of a vertical terminal	300mm
N	To the side of an opening (window, air brick, etc)	300mm
P	Above an opening (window, air brick, etc)	300mm
Q	From the top of a vertical terminal to the roof flashing	Consult manufacturer

### Terminal positions

The terminal should be located where the dispersal of combustion products is not impeded and with due regard for the damage and discoloration that may occur to building products located nearby. The terminal must not be located in a place where it is likely to cause a nuisance.

In cold and/or humid weather, water vapour may condense on leaving the terminal; the effect of such plumbing must be considered.

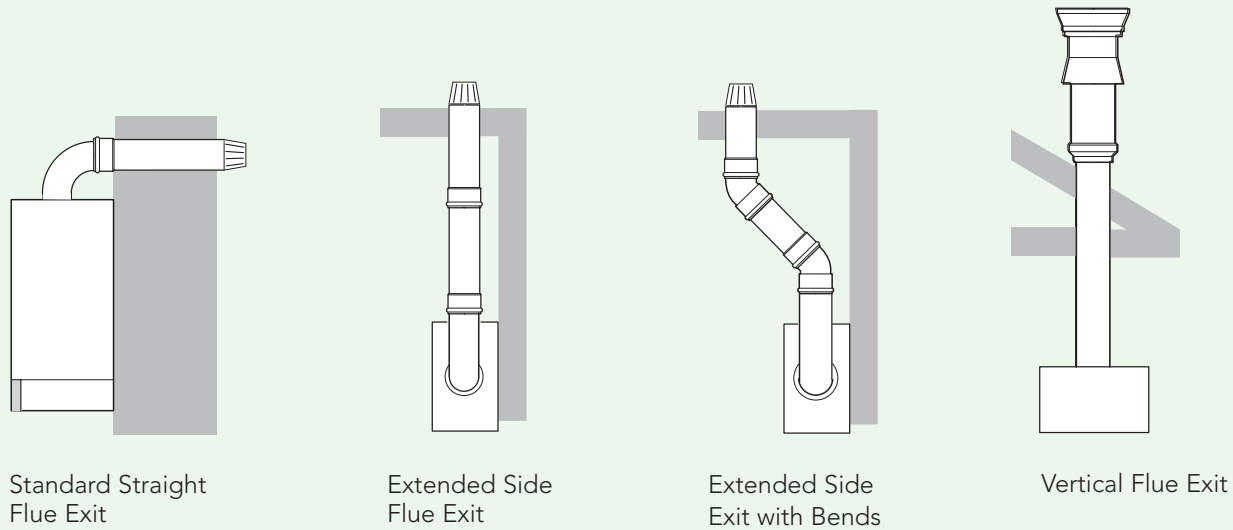
If installed less than 2m above a pavement or platform to which people have access (including balconies or flat roofs) the terminal must be protected by a guard of durable material.



For specialist advice please refer to our dedicated flue guide.

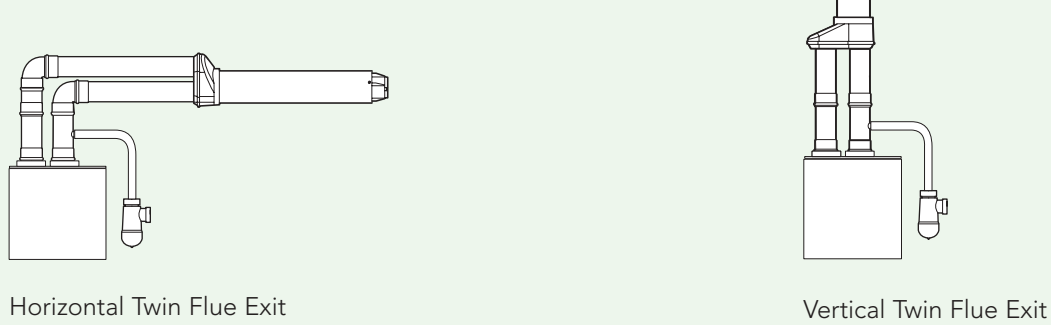
### Concentric Flue System

Detailed below are some possible flue configurations although many more are possible. Please refer to flue guide for specific details.

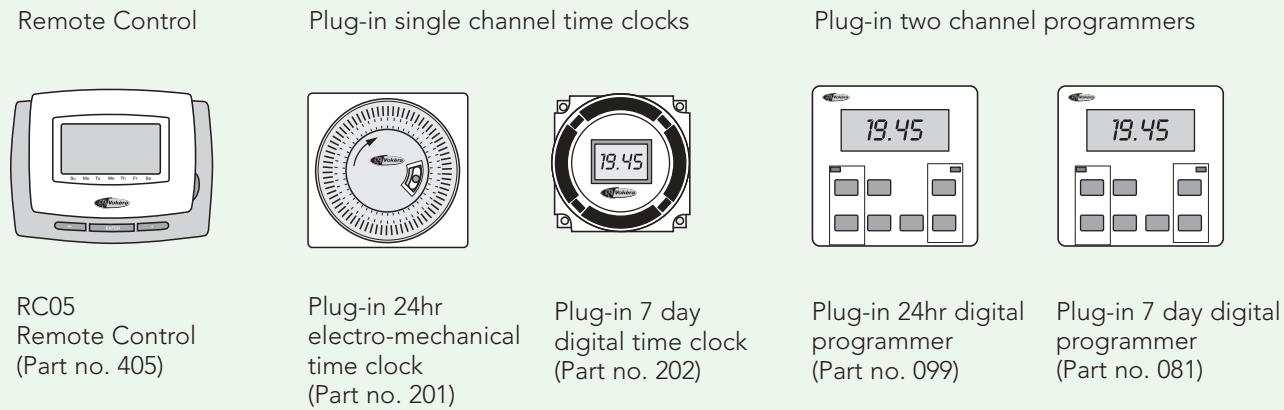


### Twin Flue System

A 1° fall back to boiler is required for twin flue installations. The fitting of a condensate tee kit is required on the exhaust outlet of the twin flue system (except Hydra & Pinnacle).



### Accessories



RC05 Remote Control (Part no. 405)

Plug-in 24hr electro-mechanical time clock (Part no. 201)

Plug-in 7 day digital time clock (Part no. 202)

Plug-in 24hr digital programmer (Part no. 099)

Plug-in 7 day digital programmer (Part no. 081)

### Combination boilers



	Hydra 26 Condensing	Syntesi Condensing	Linea 7-Series	Linea Max (floor standing)	Compact 24/28
Pre-heated hot water	●	●	●	●	-
Built-in frost protection	●	●	●	●	●
Automatic by-pass	●	●	●	●	●
Built-in filling loop	●	●	●	●	-
Pre fixing jig	●	●	●	●	-
Self start feature	●	●	●	●	●
Full hot water flame modulation ±1°C max fluctuation	●	●	●	●	●
Dry pump protection	-	●	●	●	●
'Anti-cycle' heating control	●	●	●	●	●
Electrical insulation to 'IP4X'	●	●	●	●	●
Fault diagnostic display	●	●	●	●	●
Telescopic flue system option	-	-	●	-	●
Twin flue system option	●	●	●	●	●
Vertical flue system option	●	●	●	●	●
High efficiency air/gas modulation system	●	●	-	-	-
Optional plug-in time control	●	●	●	●	Std
Combustion test over-ride control	●	●	●	●	●
Electronic burner ignition	●	●	●	●	●
Pipe space through back of boiler	Opt	●	●	●	Opt
Compartment ventilation not required	●	●	●	-	●
Domestic heat exchanger: 5yr guarantee against scaling of DHW	●	●	●	●	-
Optional pre-filling kit available	●	●	●	●	-
LPG model available	●	●	●	●	●

### System Boilers



	Mynute 12e/16e/20e	Mynute 28e/35e	Synergy 29 Condensing	Pinnacle 16 Condensing	Pinnacle 26 Condensing
Expansion vessel, safety valve, pump built in	●	●	●	●	●
'Dry loft' option possible	●	●	●	●	●
Automatic by-pass	●	●	●	●	●
Self start feature	●	●	●	●	●
Dry pump run protection	●	●	●	-	-
'Anti-cycle' heating control	●	●	●	●	●
Fault diagnostic display	-	●	●	●	●
Telescopic flue system option	●	●	-	-	-
Twin flue system option	●	●	●	●	●
Vertical flue system option	●	●	●	●	●
High efficiency air-gas modulation system	-	-	●	●	●
Optional plug-in time control	●	●	●	●	●
Electronic burner ignition	●	●	●	●	●
Compartment ventilation not required	●	●	●	●	●
LPG model available	●	●	●	●	●
Fully modulating burner	-	●	●	●	●

